

# CERTIFICATE OF LOCATION OF GOVERNMENT CORNER

County of Anoka

State of Minnesota

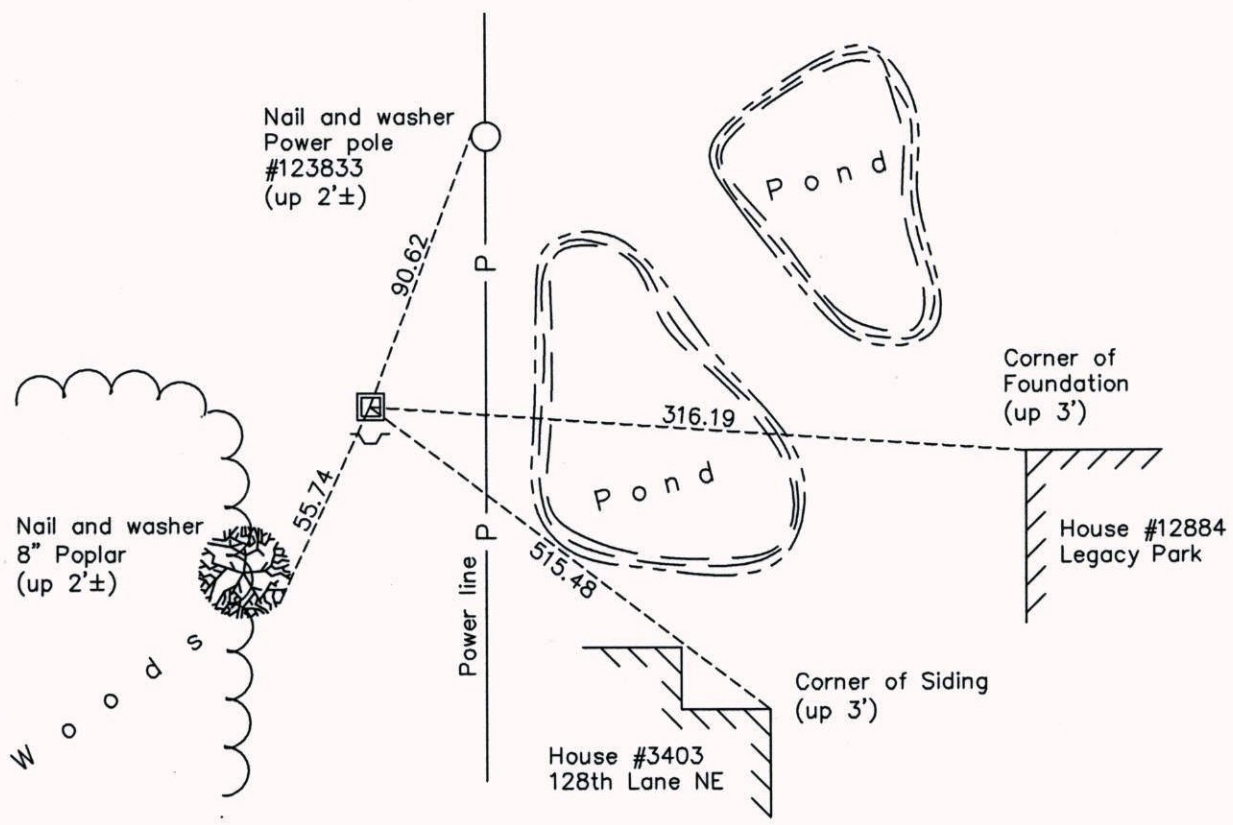
## West 1/4 Corner of Sec. 2 Township 31 Range 23

On the 23rd day of March, 1971, the described corner was evidenced by a 1" iron pipe

and to perpetuate the location of said corner, at the exact location thereof, a permanent marker was placed consisting of the same 1" iron pipe with a sign and post on the south side

AND on the 9th day of July, 2014, said permanent marker was replaced with a 2"X6' sq. steel Telspar mont. w/ 'Co. Surveyor' cap & punchmark. Replaced missing sign & post. Updated ties.

Updated reference ties are as shown below.



Revision Date  
10/02/14

N.A.D. 1983 Coordinates  
(1996 Adjustment)

County Project Coordinates	
Northing	161562.3268
Easting	521474.2674
Date	11/12/99

I hereby certify that this United States public land survey monument record is correct and complete to the best of my knowledge and belief.

*Larry D. Hoium* Date 10/02/14

Larry D. Hoium, Anoka County Surveyor  
Minnesota License Number 18165