

CERTIFICATE OF LOCATION OF GOVERNMENT CORNER

County of Anoka

State of Minnesota

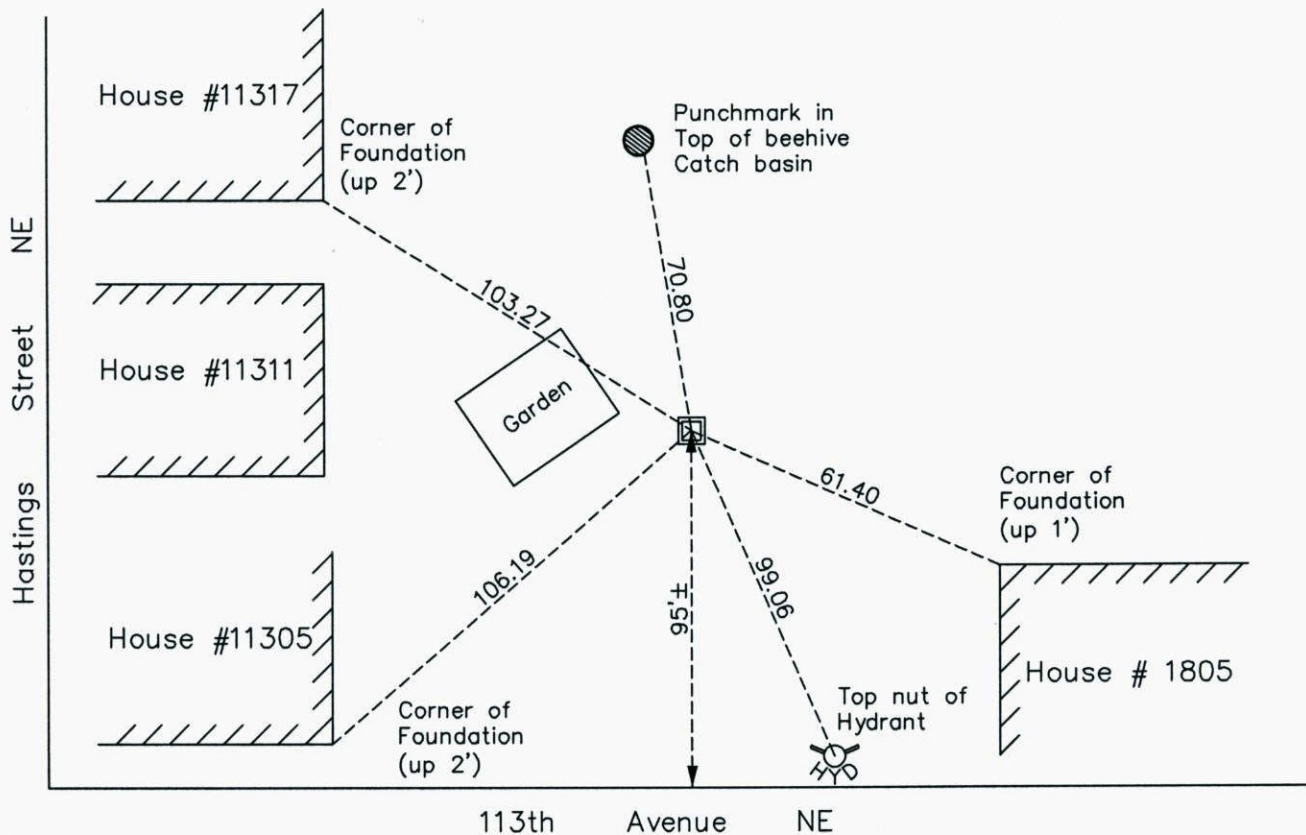
West 1/4 Corner of Sec. 16 Township 31 Range 23

On the 20th day of May, 1976, the described corner was evidenced by area resurvey

and to perpetuate the location of said corner, at the exact location thereof, a permanent marker was placed consisting of a corner location in bottom of ditch set equidistant and on line between the Northwest and Southwest corners of Section 16. No monument is in place.

AND on the 9th day of July, 2014, said permanent marker was replaced with a 2"X4' square steel Telspar monument with 'Surveyor Cap' and punchmark and the ties were updated

Updated reference ties are as shown below.



N.A.D. 1983 Coordinates
(1996 Adjustment)

County Project Coordinates	
Northing	151082.0092
Easting	510789.4191
Date	7/09/14

Revision Date
10/01/14

I hereby certify that this United States public land survey monument record is correct and complete to the best of my knowledge and belief.

Larry D. Hoium Date 10/01/14

Larry D. Hoium, Anoka County Surveyor

Minnesota License Number 18165