

CERTIFICATE OF LOCATION OF GOVERNMENT CORNER

County of Anoka

State of Minnesota

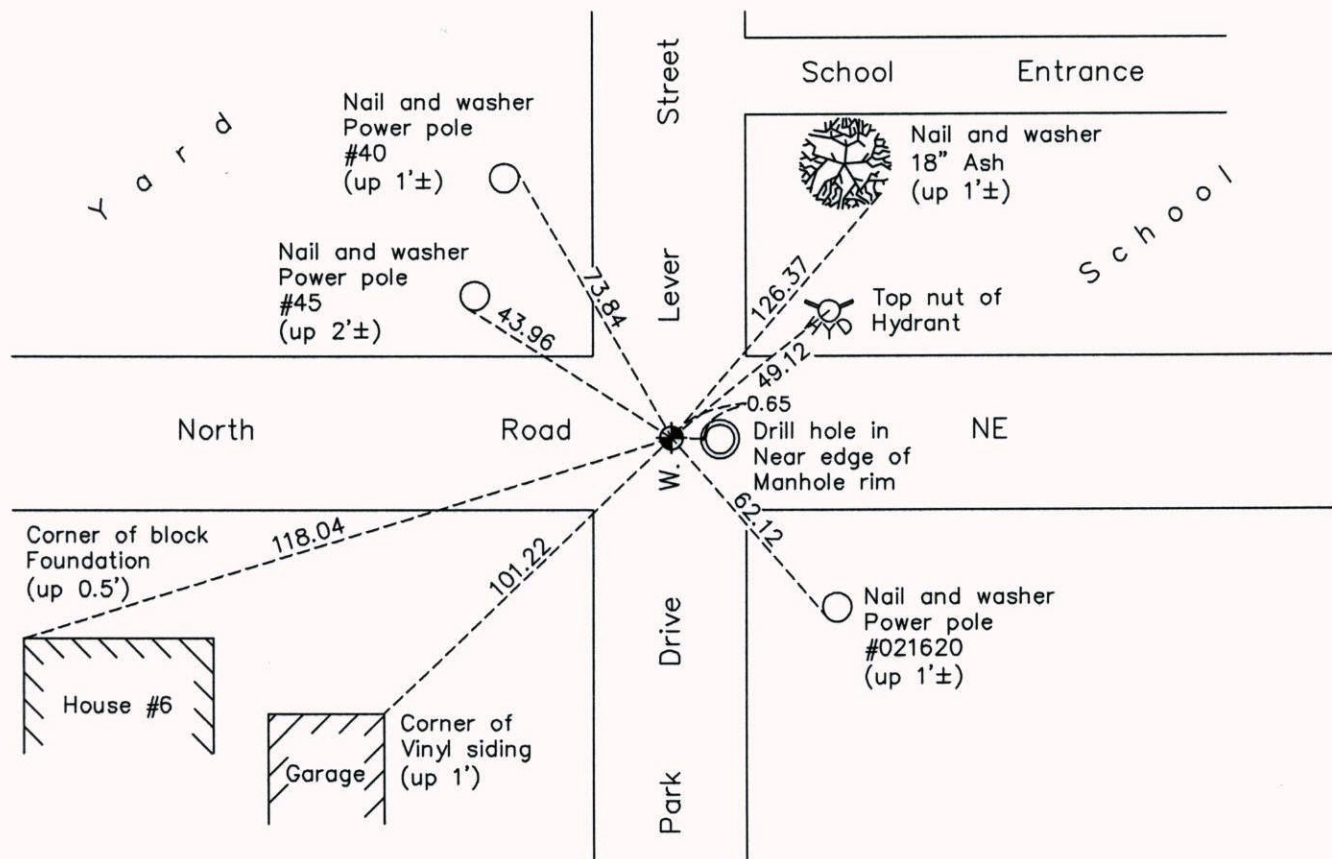
North 1/4 Corner of Sec. 25 Township 31 Range 23

On the 19th day of June, 1959, the described corner was evidenced by an iron pipe

and to perpetuate the location of said corner, at the exact location thereof, a permanent marker was placed consisting of a 1/2" iron pipe under blacktop - P.K. nails to north and east

AND on the 7th day of July, 2014, said permanent marker was replaced with a new cast iron monument and the ties were updated

Updated reference ties are as shown below.



Revision Date
10/06/14

N.A.D. 1983 Coordinates
(1996 Adjustment)

County Project Coordinates	
Northing	142966.1873
Easting	529281.7057
Date	10/28/98

I hereby certify that this United States public land survey monument record is correct and complete to the best of my knowledge and belief.

Larry D. Hoium Date 10/06/14

Larry D. Hoium, Anoka County Surveyor
Minnesota License Number 18165