

CERTIFICATE OF LOCATION OF GOVERNMENT CORNER

County of Anoka

State of Minnesota

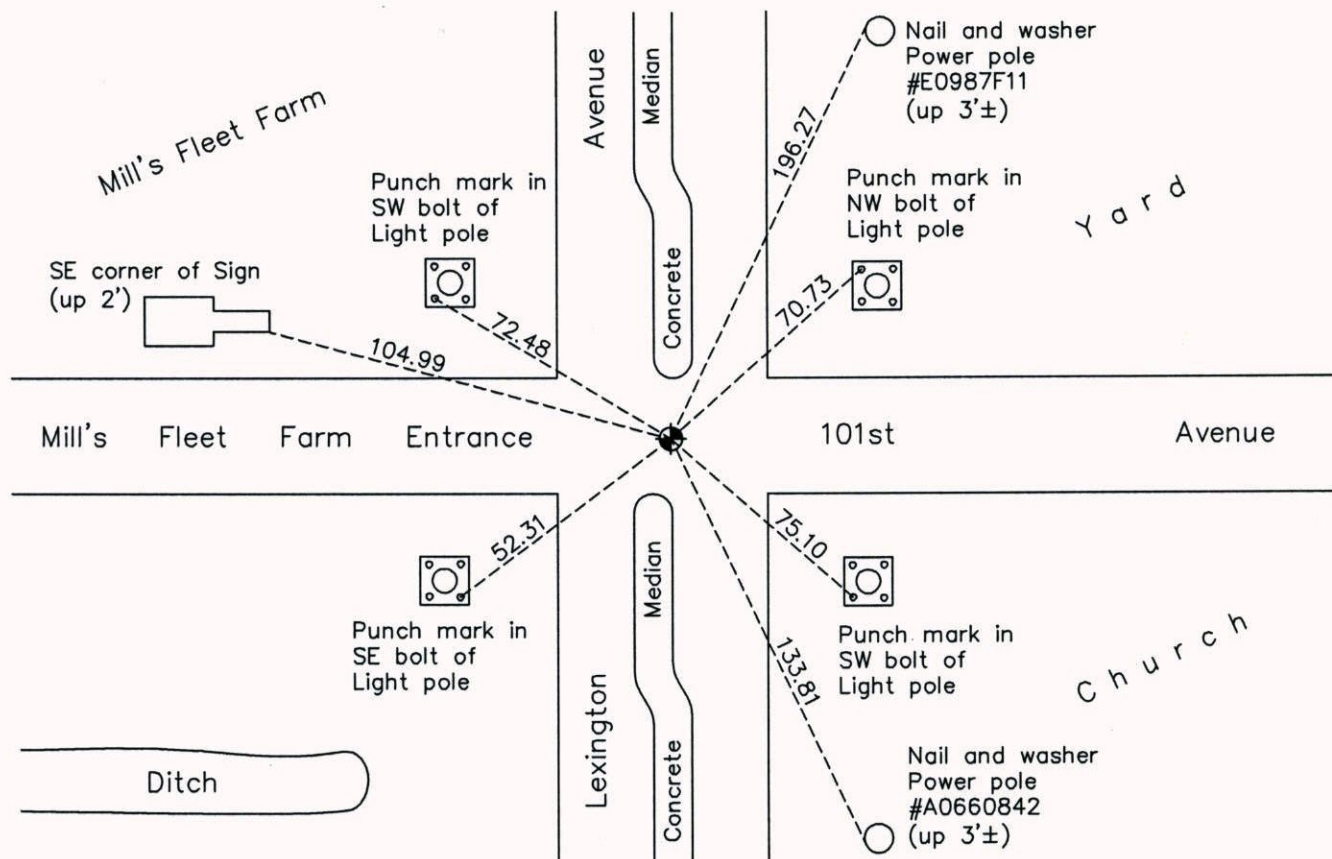
Northwest Corner of Sec. 25 Township 31 Range 23

On the 26th day of June, 1959, the described corner was evidenced by a concrete monument

and to perpetuate the location of said corner, at the exact location thereof, a permanent marker was placed consisting of a cast iron monument

AND on the 26th day of June, 2014, said permanent marker was found broken. Replaced with a new cast iron monument and updated ties on July 9, 2014.

Updated reference ties are as shown below.



Revision Date
10/03/14

N.A.D. 1983 Coordinates
(1996 Adjustment)

County Project Coordinates	
Northing	<u>143010.4778</u>
Easting	<u>526642.0679</u>
Date	<u>10/09/98</u>

I hereby certify that this United States public land survey monument record is correct and complete to the best of my knowledge and belief.

Larry D. Hoium Date 10/03/14

Larry D. Hoium, Anoka County Surveyor
Minnesota License Number 18165