

CERTIFICATE OF LOCATION OF GOVERNMENT CORNER

County of Anoka

State of Minnesota

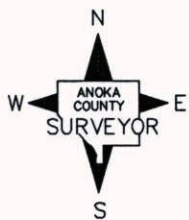
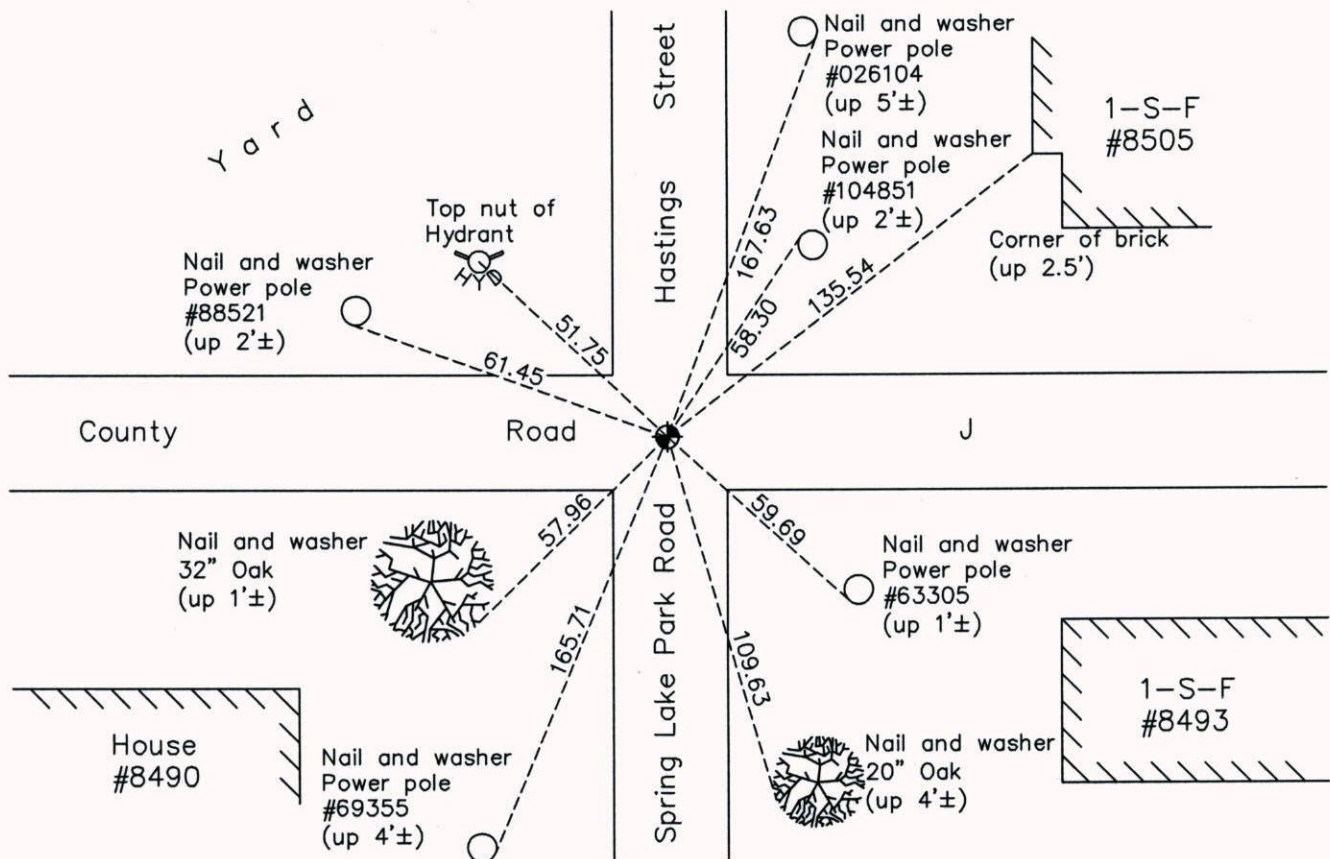
Southwest Corner of Sec. 33 Township 31 Range 23

On the 7th day of November, 1961, the described corner was evidenced by a railroad spike

and to perpetuate the location of said corner, at the exact location thereof, a permanent marker was placed consisting of a cast iron monument

AND on the 1st day of July, 2014, said permanent marker was found broken. Replaced with new cast iron monument and updated ties on July 29th, 2014.

Updated reference ties are as shown below.



Revision Date
8/12/14

N.A.D. 1983 Coordinates
(1996 Adjustment)

County Project Coordinates	
Northing	132540.5583
Easting	510721.8804
Date	7/29/99

I hereby certify that this United States public land survey monument record is correct and complete to the best of my knowledge and belief.

Larry D. Hoium Date 8/12/14

Larry D. Hoium, Anoka County Surveyor
Minnesota License Number 18165