

CERTIFICATE OF LOCATION OF GOVERNMENT CORNER

County of Anoka

State of Minnesota

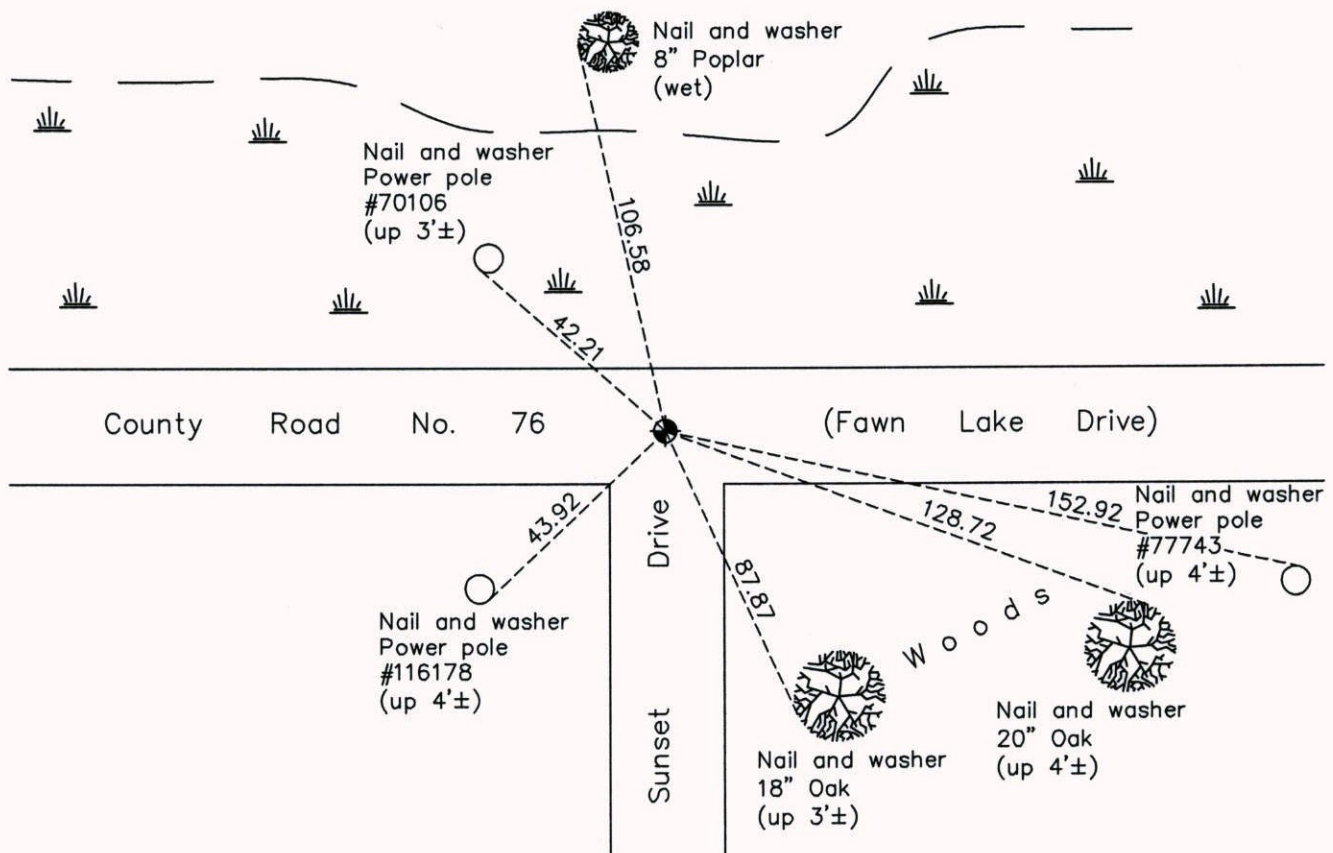
East 1/4 Corner of Sec. 25 Township 34 Range 23

On the 23rd day of July, 1962, the described corner was evidenced by a 1 1/2" iron pipe

and to perpetuate the location of said corner, at the exact location thereof, a permanent marker was placed consisting of a cast iron monument

AND on the 29th day of May, 2013, said permanent marker was found broken. Set new cast iron monument and updated ties.

Updated reference ties are as shown below.



ANOKA COUNTY SURVEYOR

Revision Date

8/15/14

N.A.D. 1983 Coordinates
(1996 Adjustment)

County Project Coordinates	
Northing	235406.5953
Easting	531974.0032
Date	5/22/02

I hereby certify that this United States public land survey monument record is correct and complete to the best of my knowledge and belief.

Larry D. Hoium Date 8/15/14

Larry D. Hoium, Anoka County Surveyor

Minnesota License Number 18165