

# CERTIFICATE OF LOCATION OF GOVERNMENT CORNER

County of Anoka

State of Minnesota

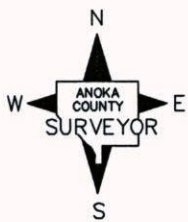
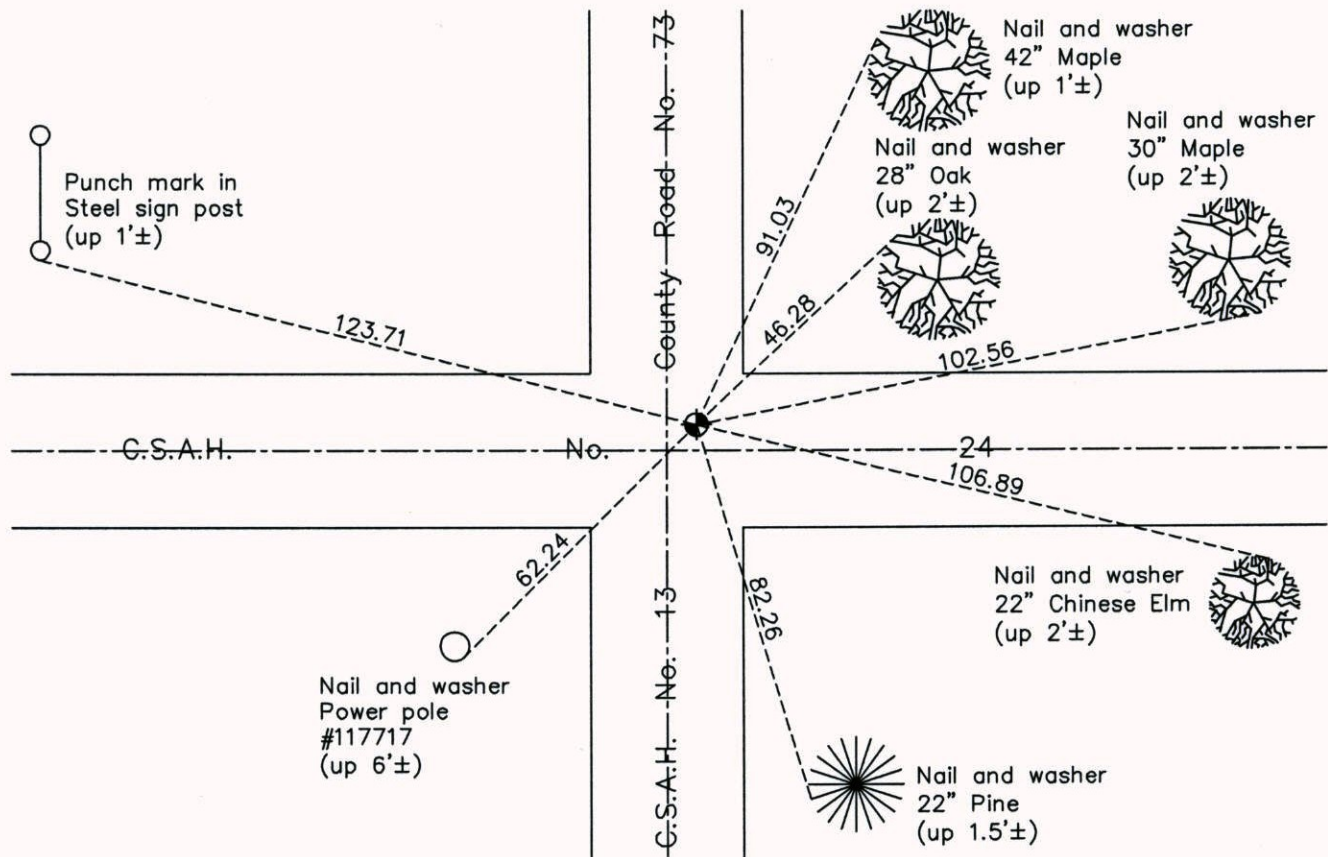
## Northwest Corner of Sec. 31 Township 34 Range 23

On the 23rd day of February, 1962, the described corner was evidenced by a 1" iron bolt

and to perpetuate the location of said corner, at the exact location thereof, a permanent marker was placed consisting of a cast iron monument

AND on the 14th day of May, 2013, said permanent marker was found and the ties were updated

Updated reference ties are as shown below.



Revision Date  
8/28/14

N.A.D. 1983 Coordinates  
(1996 Adjustment)

County Project Coordinates	
Northing	<u>232732.2258</u>
Easting	<u>500338.5341</u>
Date	<u>5/15/02</u>

I hereby certify that this United States public land survey monument record is correct and complete to the best of my knowledge and belief.

*Larry D. Hoium* Date 8/28/14

Larry D. Hoium, Anoka County Surveyor  
Minnesota License Number 18165