

CERTIFICATE OF LOCATION OF GOVERNMENT CORNER

County of Anoka

State of Minnesota

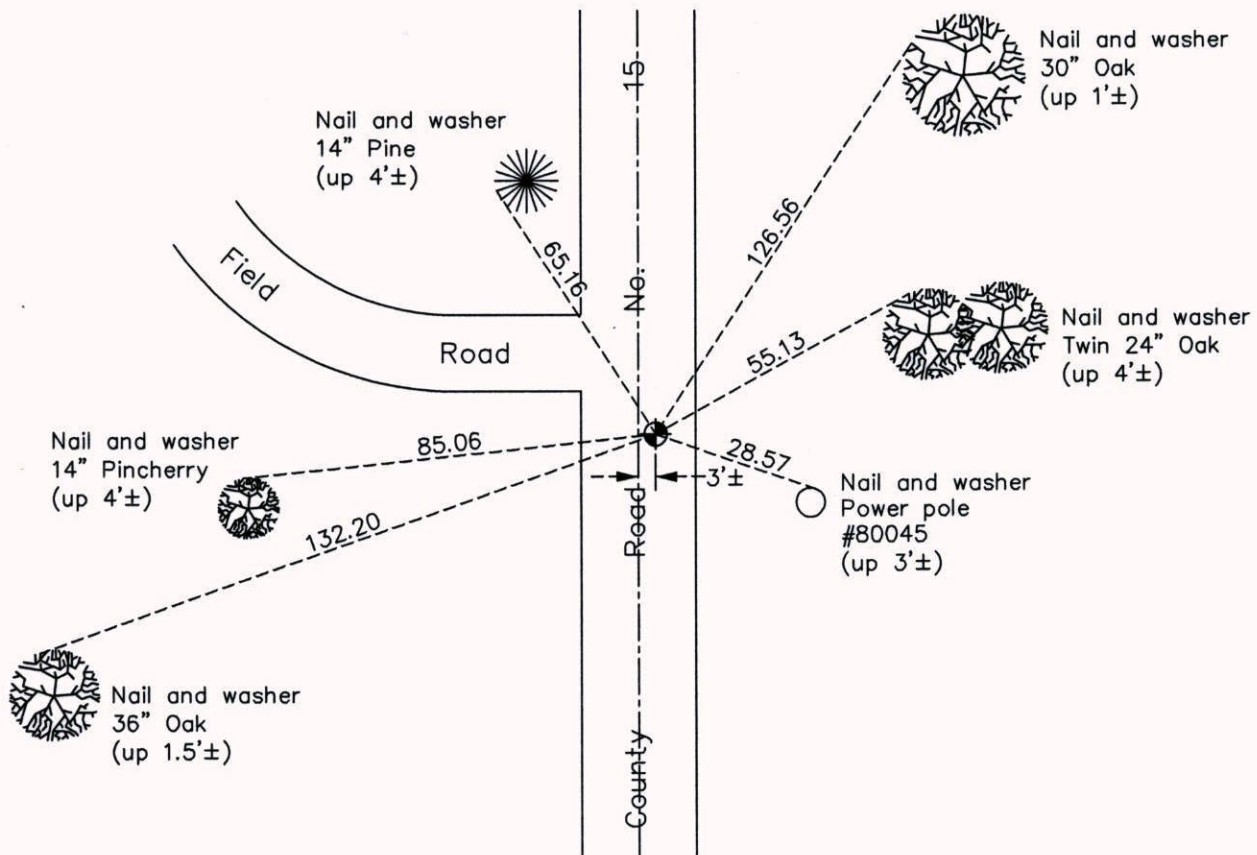
East 1/4 Corner of Sec. 2 Township 33 Range 23

On the 8th day of November, 1963, the described corner was evidenced by area resurvey

and to perpetuate the location of said corner, at the exact location thereof, a permanent marker was placed consisting of a cast iron monument

AND on the 15th day of May, 2013, said permanent marker was found and the top was loosened and painted prior to road overlay. Ties were updated

Updated reference ties are as shown below.



Revision Date

7/31/14

N.A.D. 1983 Coordinates
(1996 Adjustment)

County Project Coordinates	
Northing	<u>224759.5045</u>
Easting	<u>526452.4403</u>
Date	<u>3/26/02</u>

I hereby certify that this United States public land survey monument record is correct and complete to the best of my knowledge and belief.

Date 7/31/14
 Larry D. Hoium, Anoka County Surveyor
 Minnesota License Number 18165