

CERTIFICATE OF LOCATION OF GOVERNMENT CORNER

County of Anoka

State of Minnesota

Meander Corner of Sec. 25 Township 33 Range 23

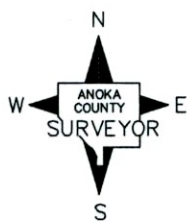
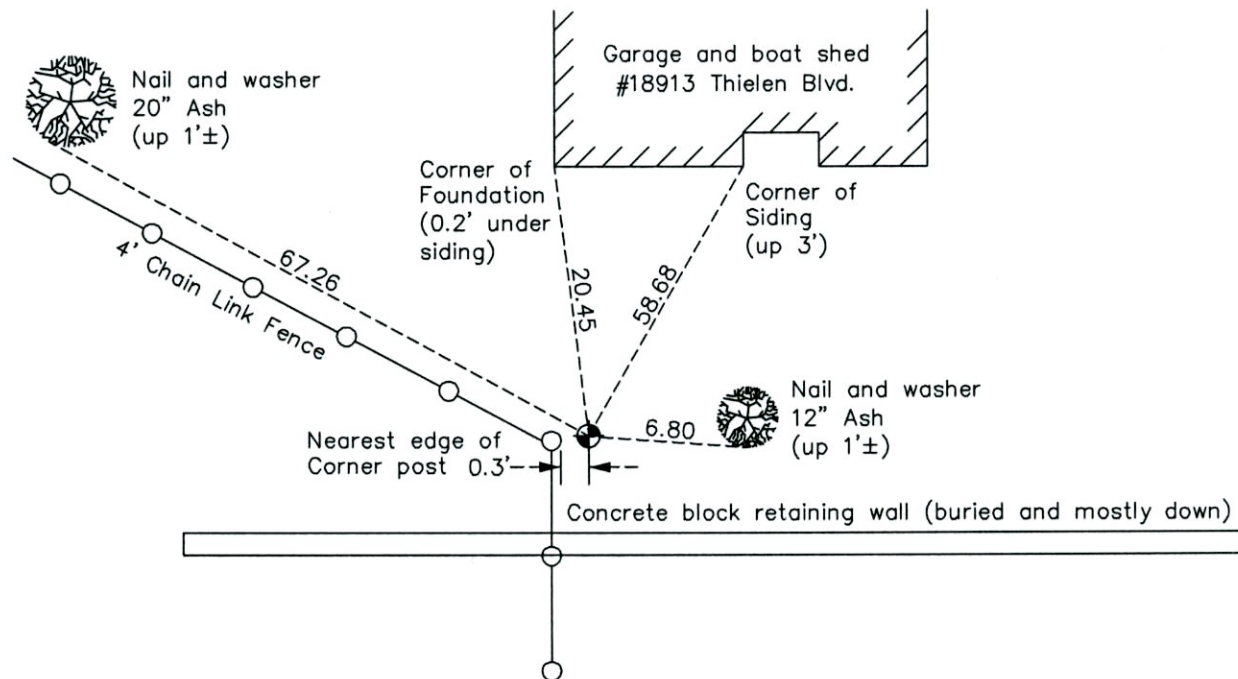
(Meander Corner No. 13—on south line of section)

On the 19th day of October, 1962, the described corner was evidenced by a concrete monument found by John Oliver

and to perpetuate the location of said corner, at the exact location thereof, a permanent marker was placed consisting of a cast iron monument

AND on the 10th day of April, 2013, said permanent marker was found down 1'± on edge of concrete base for 2" dia. fence post. Removed edge of concrete over mont. and updated ties.

Updated reference ties are as shown below.



Revision Date
8/22/14

N.A.D. 1983 Coordinates
(1996 Adjustment)

County Project Coordinates	
Northing	200912.5716
Easting	528338.6447
Date	6/11/02

I hereby certify that this United States public land survey monument record is correct and complete to the best of my knowledge and belief.

Larry D. Hoium Date 8/22/14

Larry D. Hoium, Anoka County Surveyor

Minnesota License Number 18165