

CERTIFICATE OF LOCATION OF GOVERNMENT CORNER

County of Anoka

State of Minnesota

Southwest Corner of Sec. 25 Township 33 Range 23

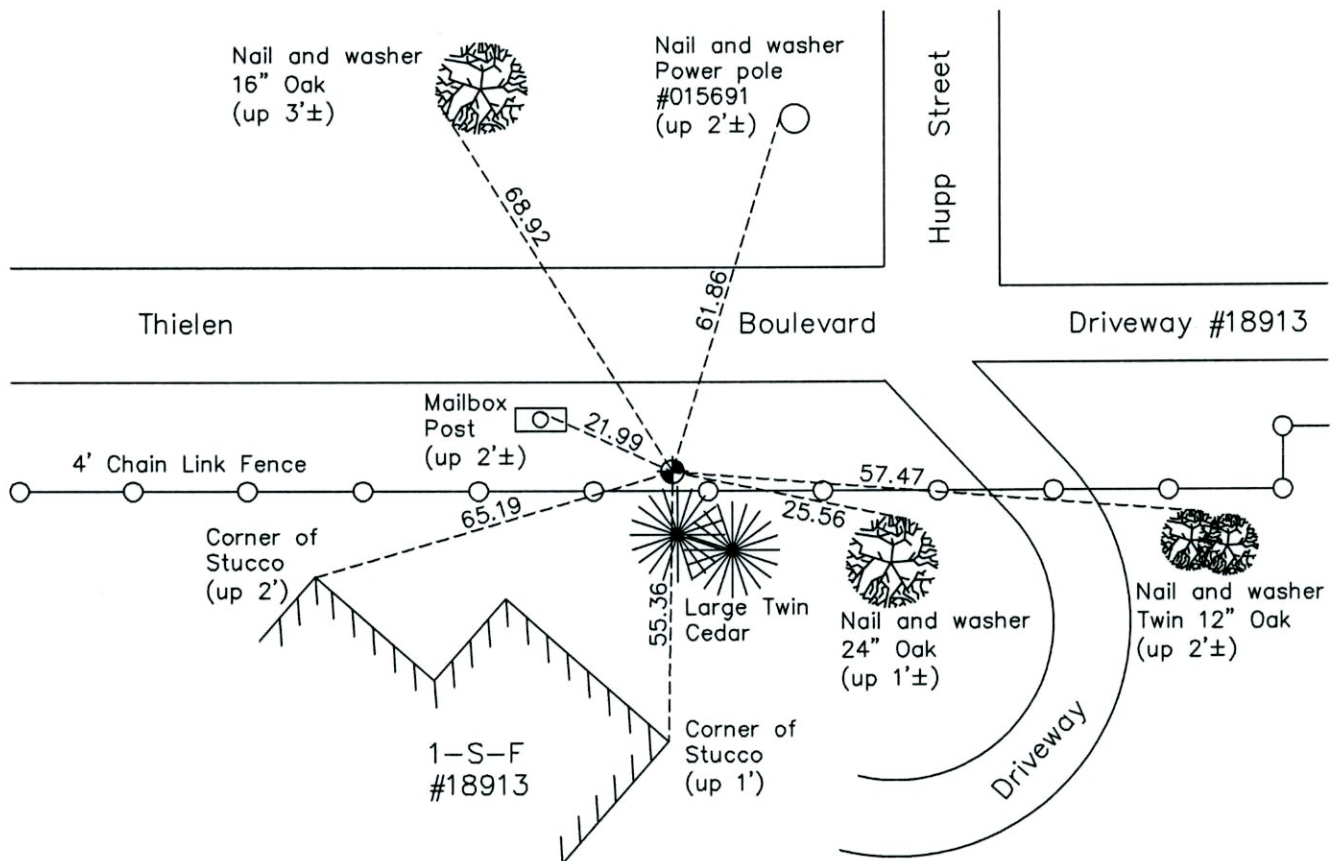
(Southwest corner of Gov't. Lot 7)

On the 19th day of October, 1962, the described corner was evidenced by a cast iron monument

and to perpetuate the location of said corner, at the exact location thereof, a permanent marker was placed consisting of a cast iron monument

AND on the 30th day of May, 2013, said permanent marker was found down 1.5'±.
Raised cast iron monument to 0.2'± below surface and updated ties.

Updated reference ties are as shown below.



N

 W ANOKA COUNTY SURVEYOR E
 S
 Revision Date
8/15/14

N.A.D. 1983 Coordinates
 (1996 Adjustment)

County Project Coordinates	
Northing	200915.7209
Easting	527868.9066
Date	6/11/02

I hereby certify that this United States public land survey monument record is correct and complete to the best of my knowledge and belief.

Date 8/15/14

Larry D. Hoium, Anoka County Surveyor
 Minnesota License Number 18165