

CERTIFICATE OF LOCATION OF GOVERNMENT CORNER

County of Anoka

State of Minnesota

Witness Corner of Sec. 35 Township 33 Range 23

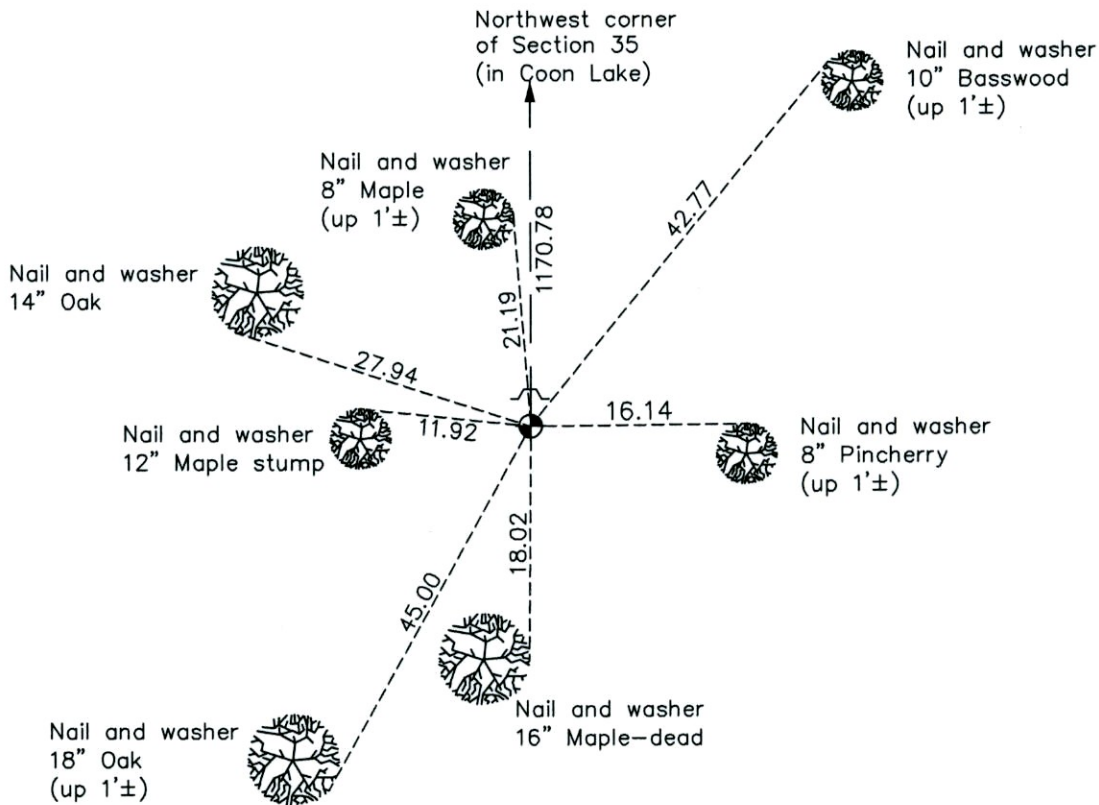
(Witness to Meander Corner No. 6—on west line of section)

On the 1st day of February, 1961, the described corner was evidenced by a 1/2" iron pipe

and to perpetuate the location of said corner, at the exact location thereof, a permanent marker was placed consisting of a cast iron monument with a sign and post on the north side

AND on the 3rd day of April, 2013, said permanent marker was found missing. Set 2"x6' sq. steel Telspar mont. w/ 'County Surveyor' cap, set new sign & post & updated ties on 6/11/13.

Updated reference ties are as shown below.



N.A.D. 1983 Coordinates
(1996 Adjustment)

County Project Coordinates

Northing 199816.5195

Easting 521257.1488

Date 3/18/03

I hereby certify that this United States public land survey monument record is correct and complete to the best of my knowledge and belief.

Larry D. Hoium Date 8/25/14

Larry D. Hoium, Anoka County Surveyor

Minnesota License Number 18165

Revision Date
8/25/14