

CERTIFICATE OF LOCATION OF GOVERNMENT CORNER

County of Anoka

State of Minnesota

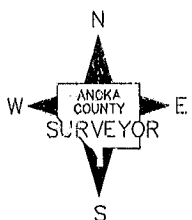
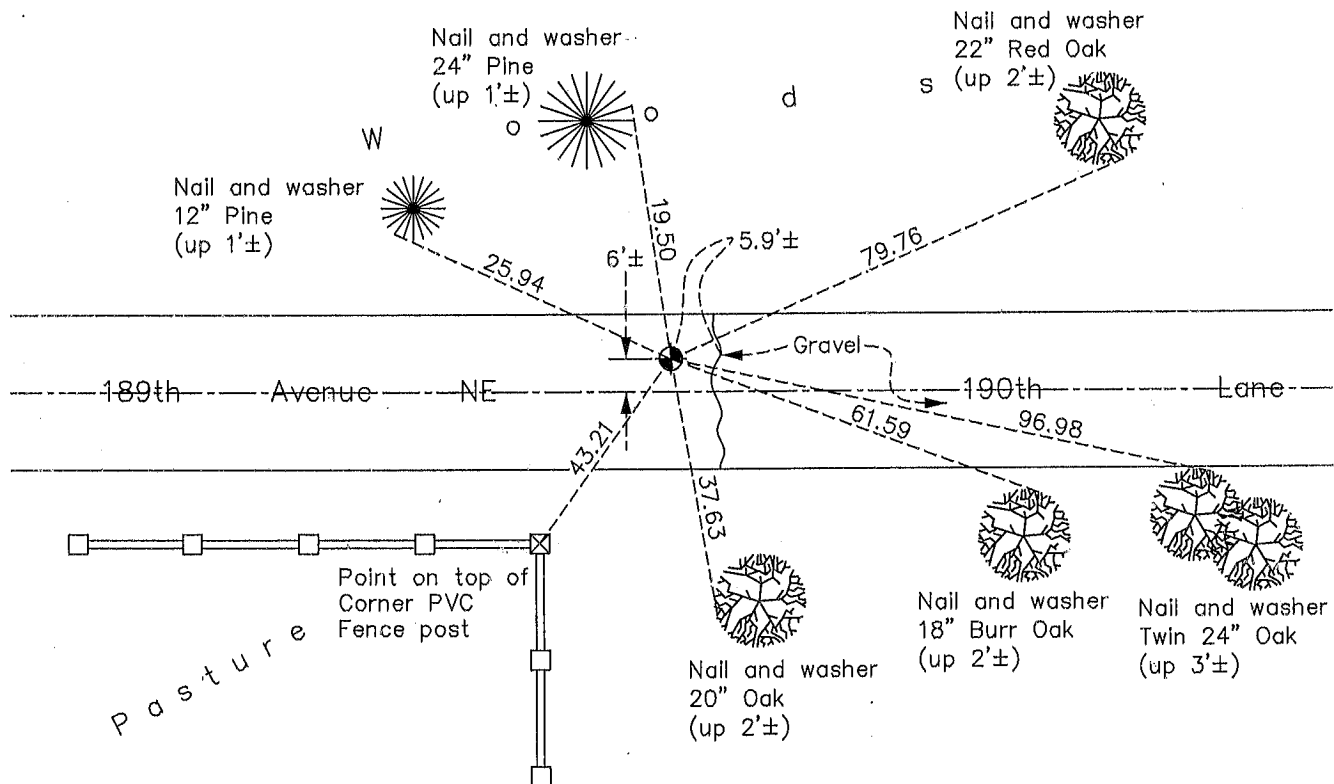
Southeast Corner of Sec. 25 Township 33 Range 23

On the 15th day of June, 1960, the described corner was evidenced by a concrete monument

and to perpetuate the location of said corner, at the exact location thereof, a permanent marker was placed consisting of a cast iron monument

AND on the 25th day of November, 2013, said permanent marker was found broken, was replaced with a new cast iron monument and the ties were updated

Updated reference ties are as shown below.



Revision Date
3/27/14

N.A.D. 1983 Coordinates
(1996 Adjustment)

| County Project Coordinates | |
|----------------------------|--------------------|
| Northing | <u>200877.2106</u> |
| Easting | <u>531835.8958</u> |
| Date | <u>7/11/02</u> |

I hereby certify that this United States public land survey monument record is correct and complete to the best of my knowledge and belief.

[Signature] Date 3/27/14

Larry D. Hoium, Anoka County Surveyor

Minnesota License Number 18165