

CERTIFICATE OF LOCATION OF GOVERNMENT CORNER

County of Anoka

State of Minnesota

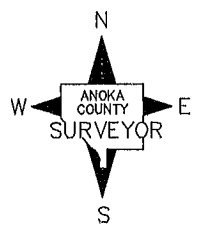
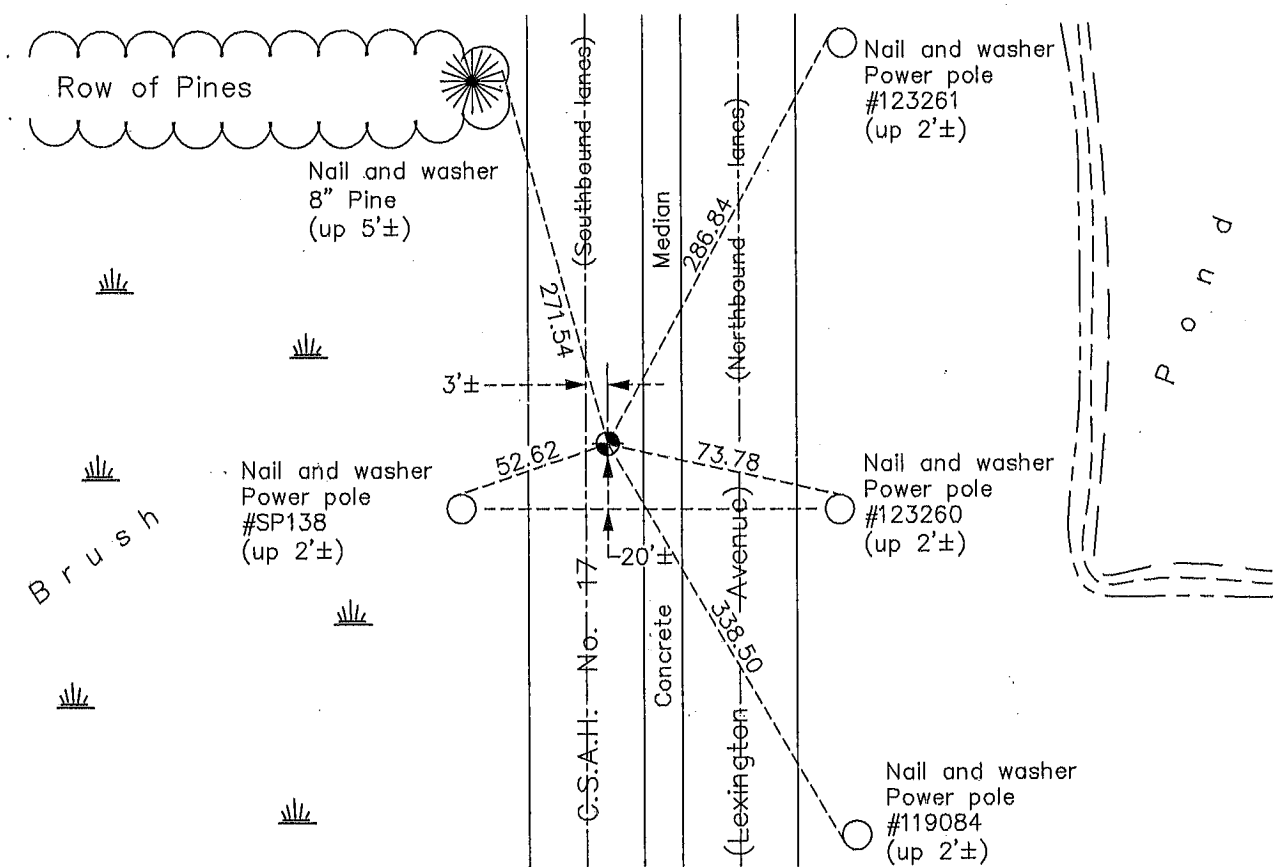
East 1/4 Corner of Sec. 35 Township 32 Range 23

On the 8th day of August, 1969, the described corner was evidenced by area resurvey

and to perpetuate the location of said corner, at the exact location thereof, a permanent marker was placed consisting of a cast iron monument

AND on the 25th day of October, 2013, said permanent marker was replaced with a new cast iron monument after road construction and the ties were updated

Updated reference ties are as shown below.



N.A.D. 1983 Coordinates
(1996 Adjustment)

County Project Coordinates	
Northing	166798.1632
Easting	526720.0037
Date	12/13/01

Revision Date
3/27/14

I hereby certify that this United States public land survey monument record is correct and complete to the best of my knowledge and belief.

Larry D. Hoium Date 3/27/14

Larry D. Hoium, Anoka County Surveyor
Minnesota License Number 18165