

CERTIFICATE OF LOCATION OF GOVERNMENT CORNER

County of Anoka

State of Minnesota

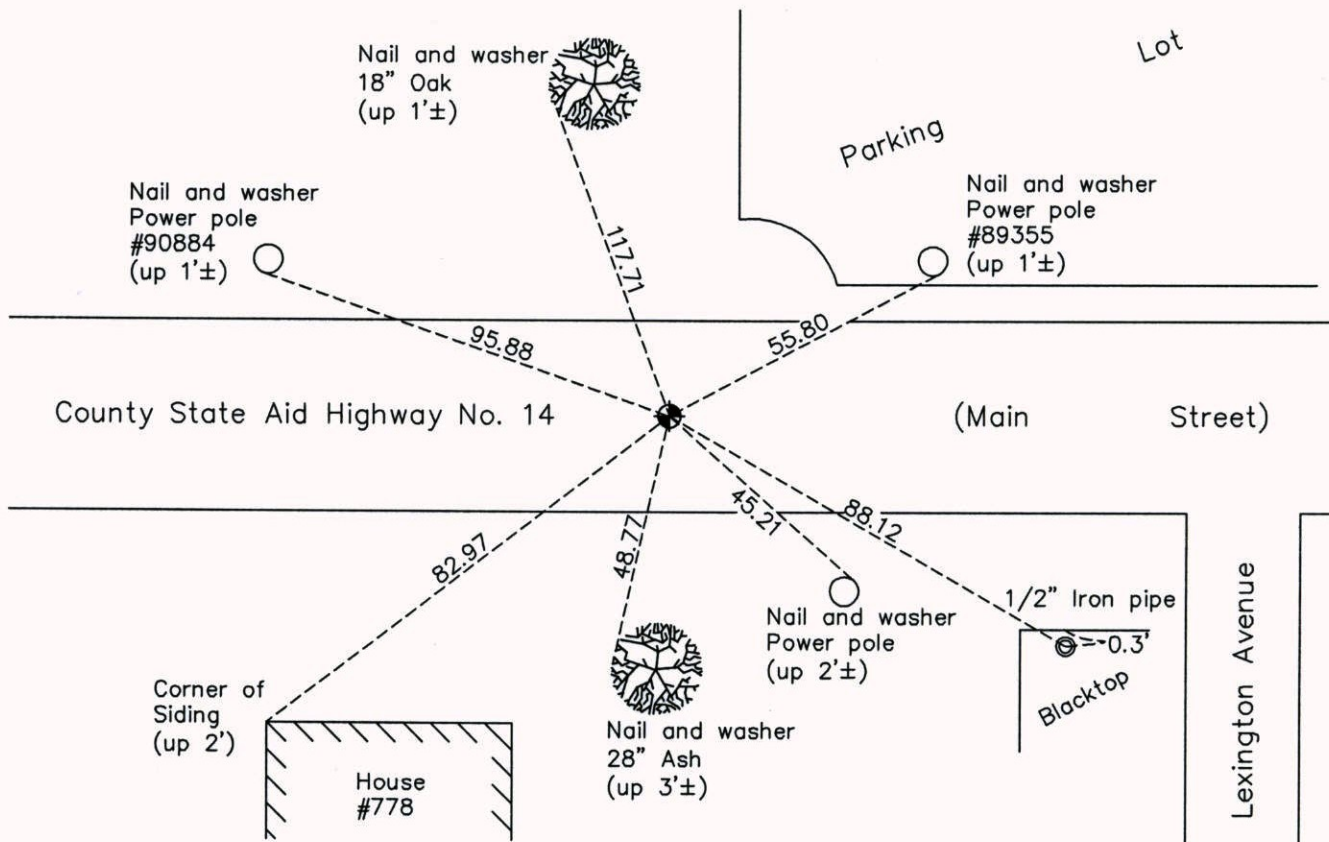
Southwest Corner of Sec. 4 Township 31 Range 22

On the 14th day of March, 1962, the described corner was evidenced by a concrete monument

and to perpetuate the location of said corner, at the exact location thereof, a permanent marker was placed consisting of a cast iron monument

AND on the 16th day of August, 2013, said permanent marker was replaced with a new cast iron monument over concrete monument after road construction and updated ties.

Updated reference ties are as shown below.



Revision Date

9/26/14

N.A.D. 1983 Coordinates
(1996 Adjustment)

County Project Coordinates	
Northing	158872.8498
Easting	542475.0397
Date	1/21/98

I hereby certify that this United States public land survey monument record is correct and complete to the best of my knowledge and belief.

Date 9/26/14
 _____, Anoka County Surveyor
 Minnesota License Number 18165