

CERTIFICATE OF LOCATION OF GOVERNMENT CORNER

County of Anoka

State of Minnesota

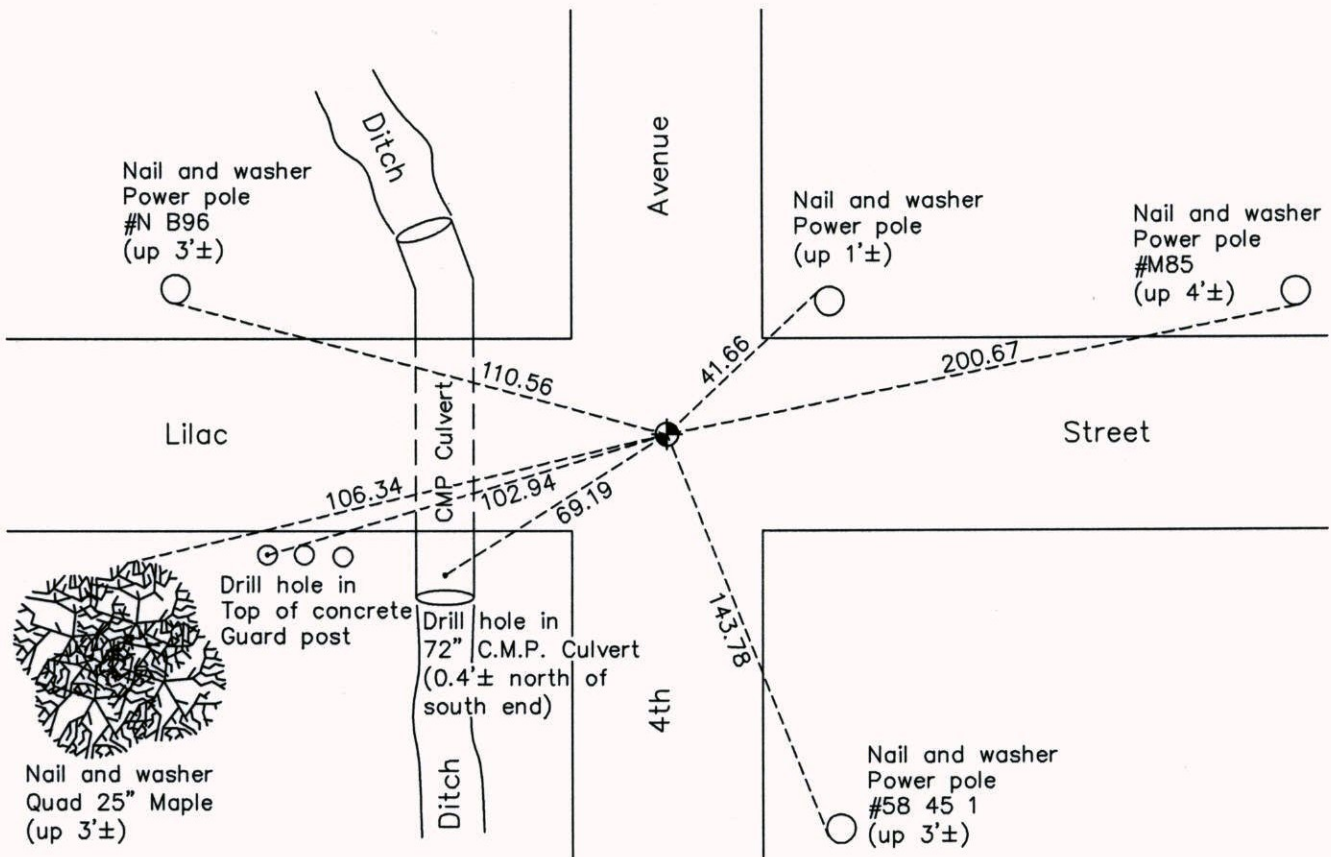
Northeast Corner of Sec. 18 Township 31 Range 22

On the 28th day of February, 1963, the described corner was evidenced by a 4"X4"
concrete monument

and to perpetuate the location of said corner, at the exact location thereof, a permanent marker
 was placed consisting of a cast iron monument

AND on the 16th day of August, 2013, said permanent marker was replaced with a new
cast iron monument after road construction and updated ties.

Updated reference ties are as shown below.



N
 W ANOKA COUNTY SURVEYOR E
 S

Revision Date
9/29/14

N.A.D. 1983 Coordinates
 (1996 Adjustment)

County Project Coordinates	
Northing	153631.4434
Easting	537165.4893
Date	1/26/96

I hereby certify that this United States public land survey monument record is correct and complete to the best of my knowledge and belief.

Larry D. Hoium Date 9/29/14

Larry D. Hoium, Anoka County Surveyor
 Minnesota License Number 18165