

CERTIFICATE OF LOCATION OF GOVERNMENT CORNER

County of Anoka

State of Minnesota

Witness Corner of Sec. 16 Township 33 Range 25

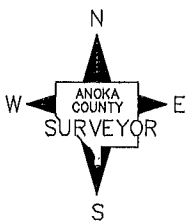
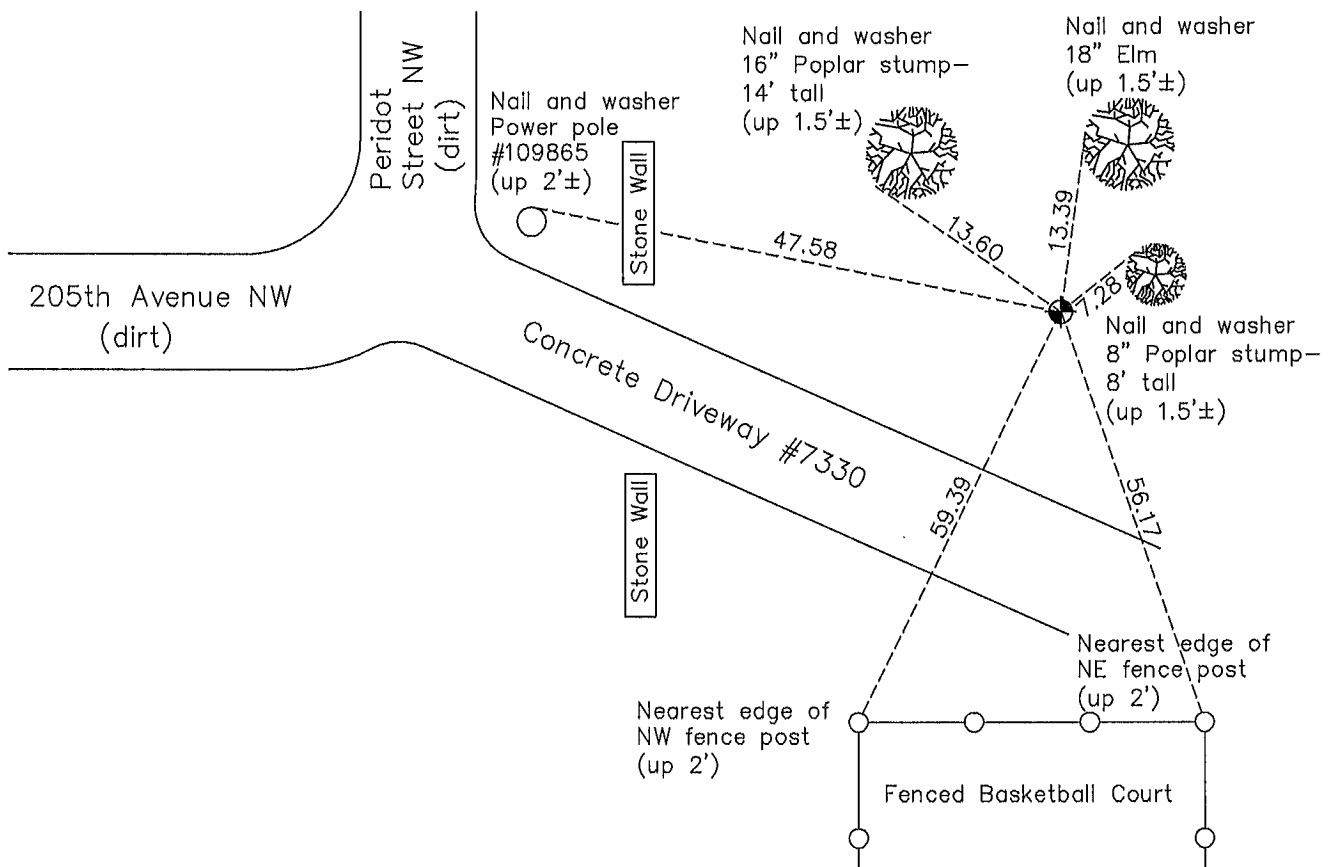
(On the south line of SE 1/4)

On the 17th day of April, 1985, the described corner was evidenced by area resurvey

and to perpetuate the location of said corner, at the exact location thereof, a permanent marker was placed consisting of a cast iron monument with a sign and post on the north side

AND on the 21st day of April, 2014, said permanent marker was found down 0.1'± and the ties were updated. Sign and post were removed at property owners request.

Updated reference ties are as shown below.



Revision Date
4/22/14

N.A.D. 1983 Coordinates
(1996 Adjustment)

County Project Coordinates	
Northing	212003.3686
Easting	452121.5593
Date	10/30/02

I hereby certify that this United States public land survey monument record is correct and complete to the best of my knowledge and belief.

Larry D. Hoium Date 4/22/14

Larry D. Hoium, Anoka County Surveyor

Minnesota License Number 18165