

CERTIFICATE OF LOCATION OF GOVERNMENT CORNER

County of Anoka

State of Minnesota

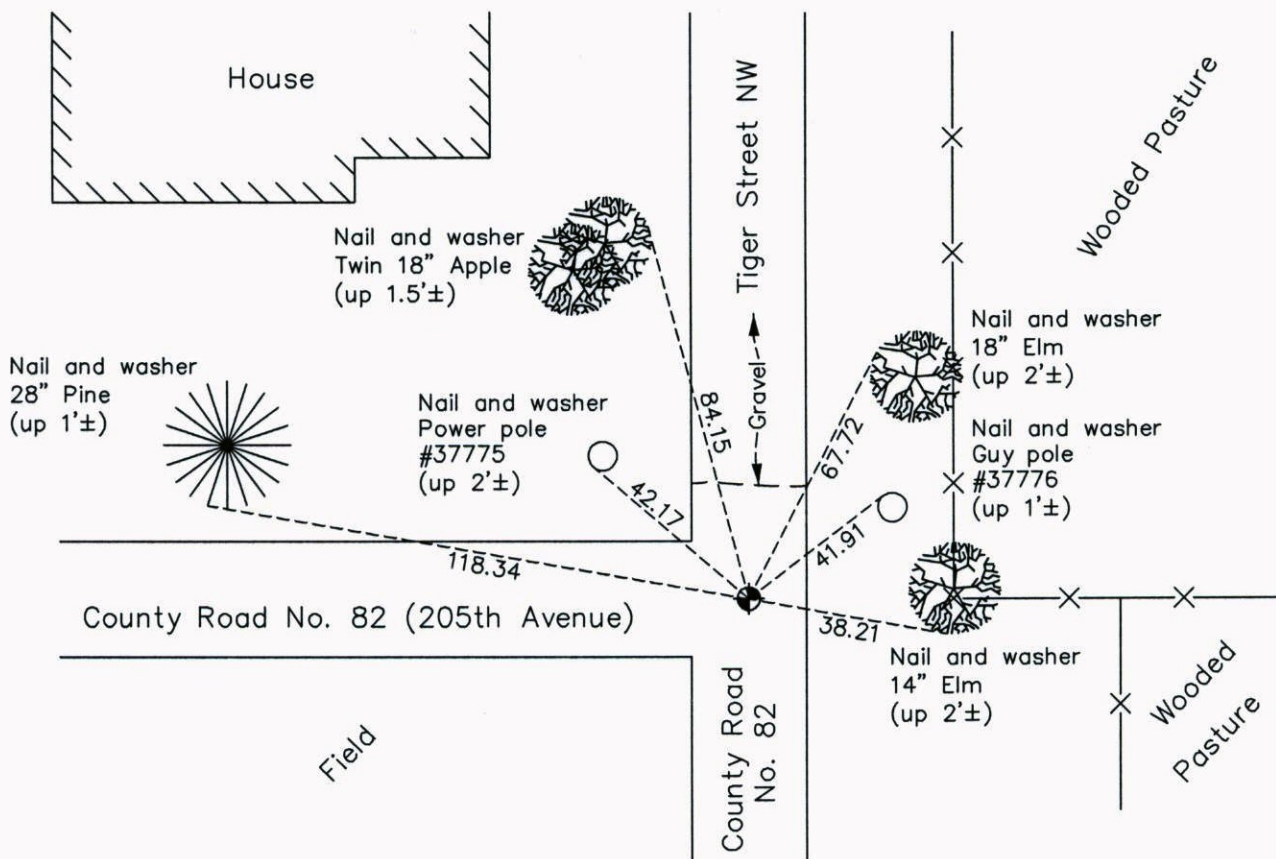
Northeast Corner of Sec. 19 Township 33 Range 25

On the 7th day of August, 1961, the described corner was evidenced by a 60d spike

and to perpetuate the location of said corner, at the exact location thereof, a permanent marker was placed consisting of a cast iron monument

AND on the 10th day of July, 2014, said permanent marker was replaced with a new cast iron monument after road construction and the ties were updated

Updated reference ties are as shown below.



N
W ANOKA COUNTY SURVEYOR E
S

Revision Date
10/07/14

N.A.D. 1983 Coordinates
(1996 Adjustment)

County Project Coordinates	
Northing	212117.0629
Easting	442332.6745
Date	9/03/02

I hereby certify that this United States public land survey monument record is correct and complete to the best of my knowledge and belief.

Larry D. Hoium Date 10/07/14

Larry D. Hoium, Anoka County Surveyor
Minnesota License Number 18165