

# CERTIFICATE OF LOCATION OF GOVERNMENT CORNER

County of Anoka

State of Minnesota

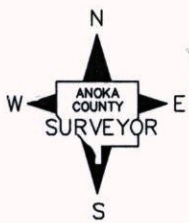
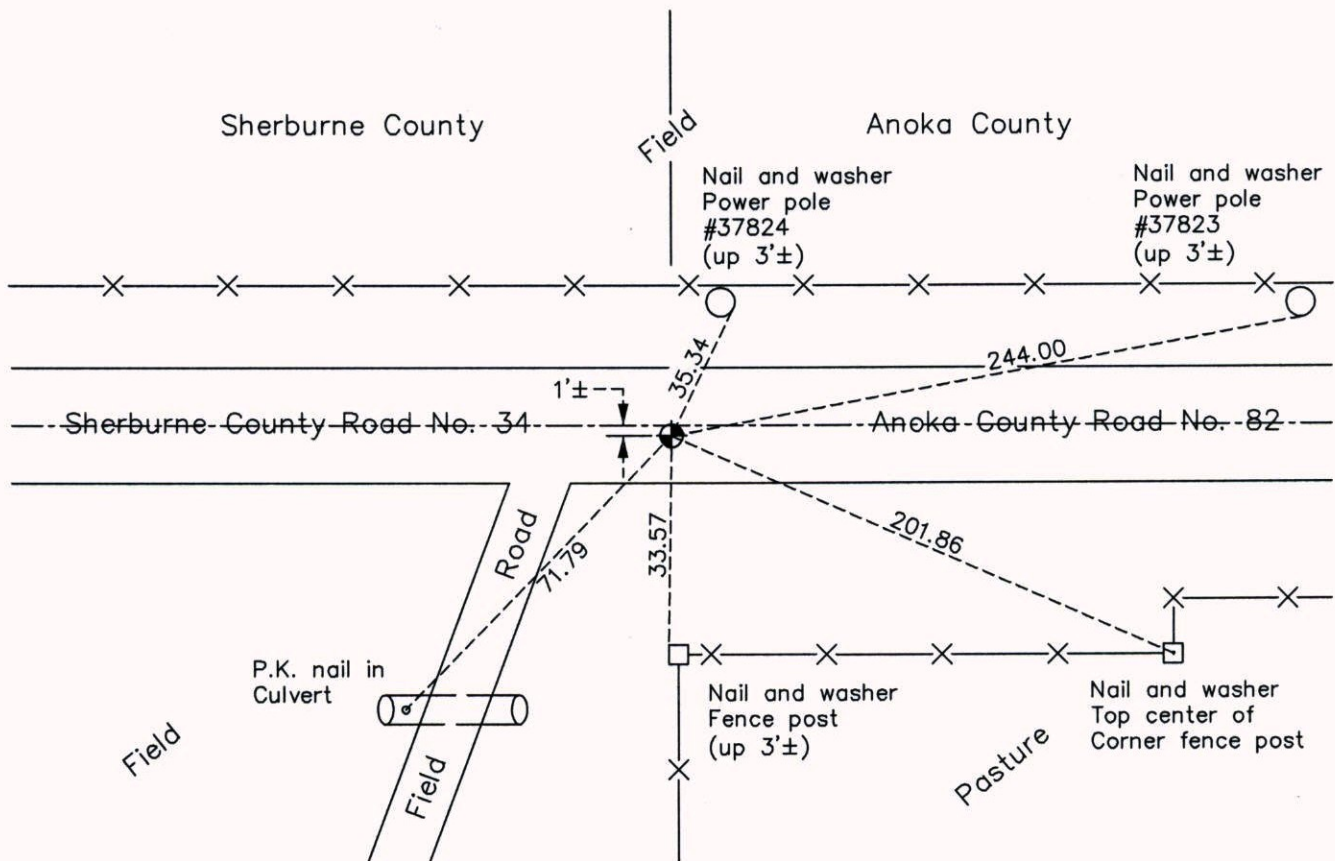
## Northwest Corner of Sec. 19 Township 33 Range 25

On the 17th day of July, 1970, the described corner was evidenced by Sherburne  
County cast iron monument

and to perpetuate the location of said corner, at the exact location thereof, a permanent marker  
 was placed consisting of the same cast iron monument

AND on the 10th day of July, 2014, said permanent marker was replaced with a new  
cast iron monument after road construction and the ties were updated

Updated reference ties are as shown below.



Revision Date  
10/07/14

N.A.D. 1983 Coordinates  
 (1996 Adjustment)

County Project Coordinates	
Northing	212131.4550
Easting	437352.7462
Date	8/21/02

I hereby certify that this United States public land survey monument record is correct and complete to the best of my knowledge and belief.

*Larry D. Hoium* Date 10/07/14

Larry D. Hoium, Anoka County Surveyor  
 Minnesota License Number 18165