

# CERTIFICATE OF LOCATION OF GOVERNMENT CORNER

County of Anoka

State of Minnesota

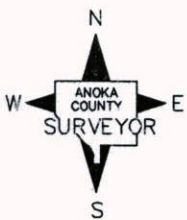
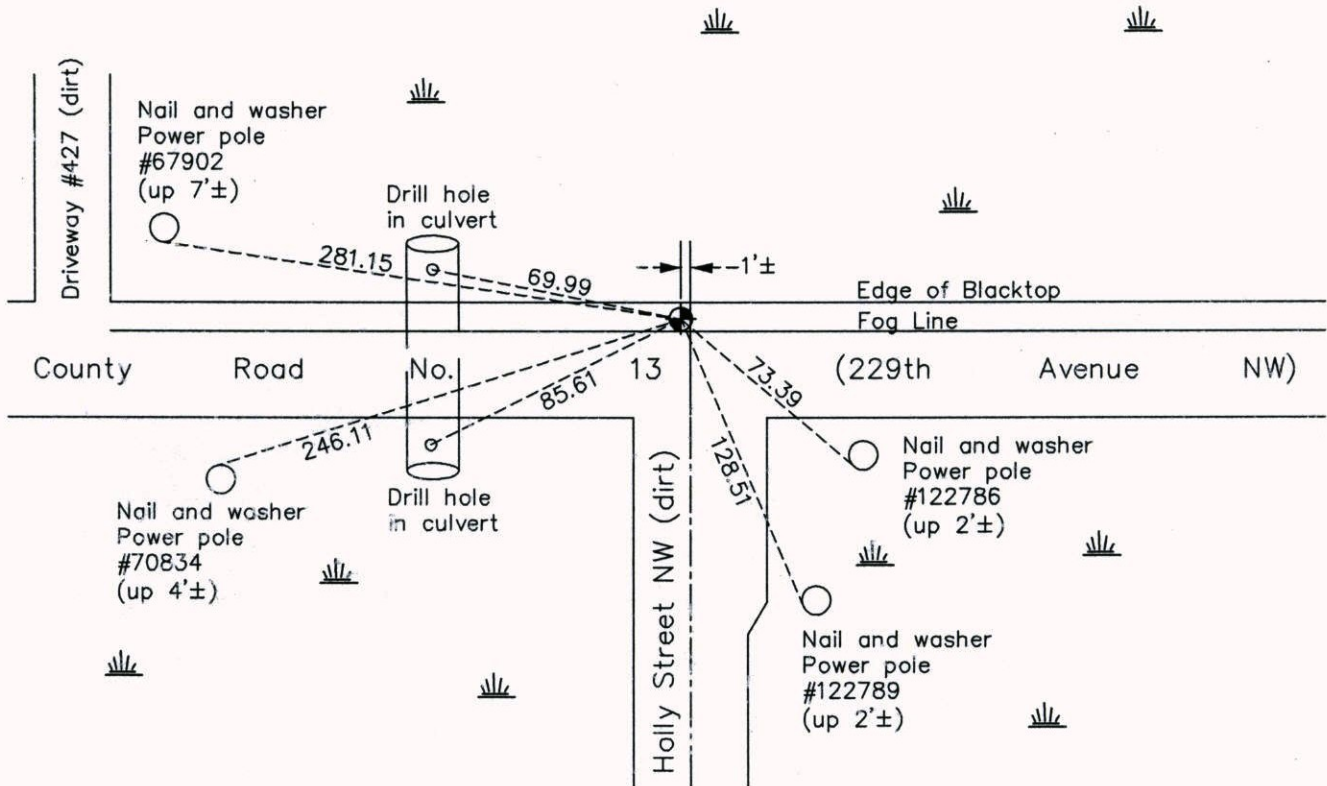
## North 1/4 Corner of Sec. 1 Township 33 Range 24

On the 8th day of April, 1969, the described corner was evidenced by area resurvey

and to perpetuate the location of said corner, at the exact location thereof, a permanent marker was placed consisting of a cast iron monument

AND on the 20th day of August, 2013, said permanent marker was replaced with a new cast iron monument after road construction and updated ties.

Updated reference ties are as shown below.



Revision Date  
9/23/14

N.A.D. 1983 Coordinates  
(1996 Adjustment)

County Project Coordinates	
Northing	227435.4718
Easting	497707.4677
Date	2/21/01

I hereby certify that this United States public land survey monument record is correct and complete to the best of my knowledge and belief.

*Larry D. Hoium* Date 9/23/14

Larry D. Hoium, Anoka County Surveyor  
Minnesota License Number 18165