

CERTIFICATE OF LOCATION OF GOVERNMENT CORNER

County of Anoka

State of Minnesota

Northwest Corner of Sec. 18 Township 33 Range 24

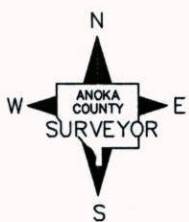
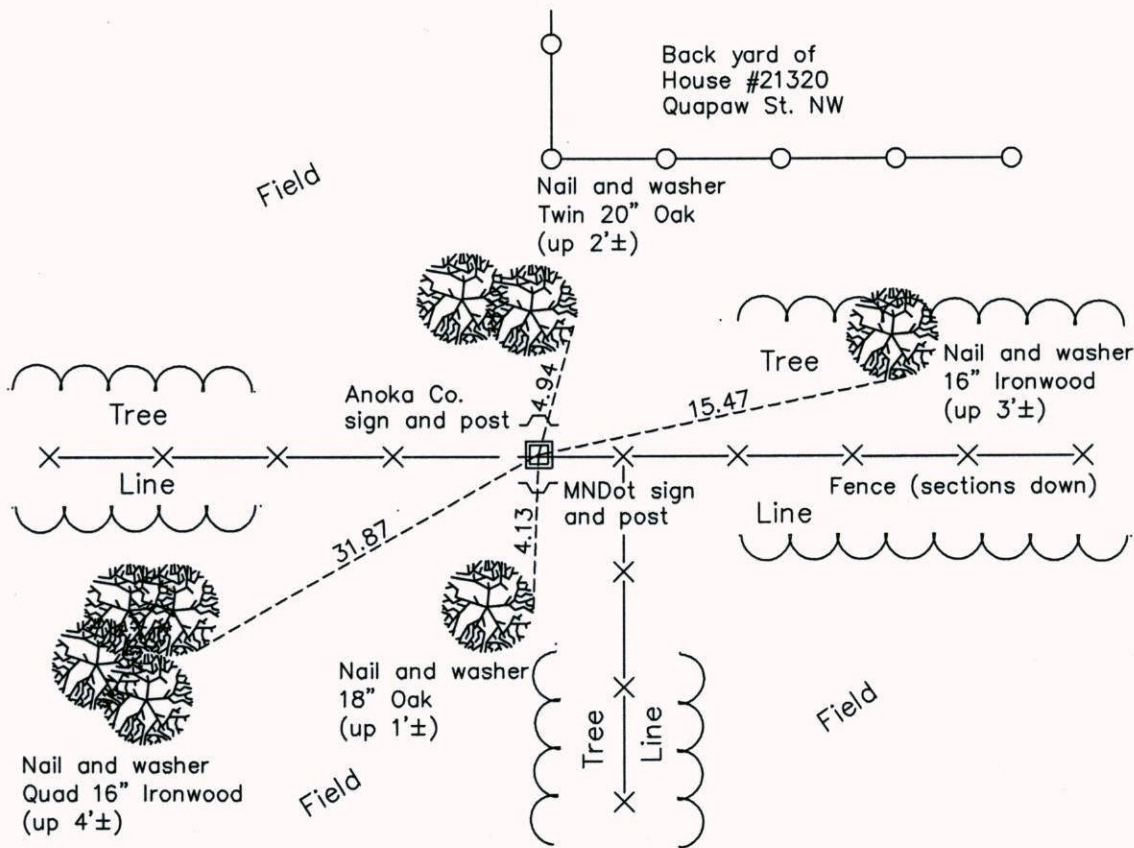
On the 5th day of May, 1967, the described corner was evidenced by an old spike at the location of resurvey

and to perpetuate the location of said corner, at the exact location thereof, a permanent marker was placed consisting of a 1/2" iron pipe in trunk of 20" Oak

AND on the 18th day of January, 2012, said permanent marker was found in ground up 0.2'±.

Replaced IP w/ 2"x4' sq. steel Telspar mont., set sign & post and updated ties on June 24, 2013.

Updated reference ties are as shown below.



Revision Date
8/25/14

N.A.D. 1983 Coordinates
(1996 Adjustment)

County Project Coordinates	
Northing	217165.2235
Easting	468667.6908
Date	5/08/01

I hereby certify that this United States public land survey monument record is correct and complete to the best of my knowledge and belief.

Larry D. Hoium Date 8/25/14

Larry D. Hoium, Anoka County Surveyor

Minnesota License Number 18165