

CERTIFICATE OF LOCATION OF GOVERNMENT CORNER

County of Anoka

State of Minnesota

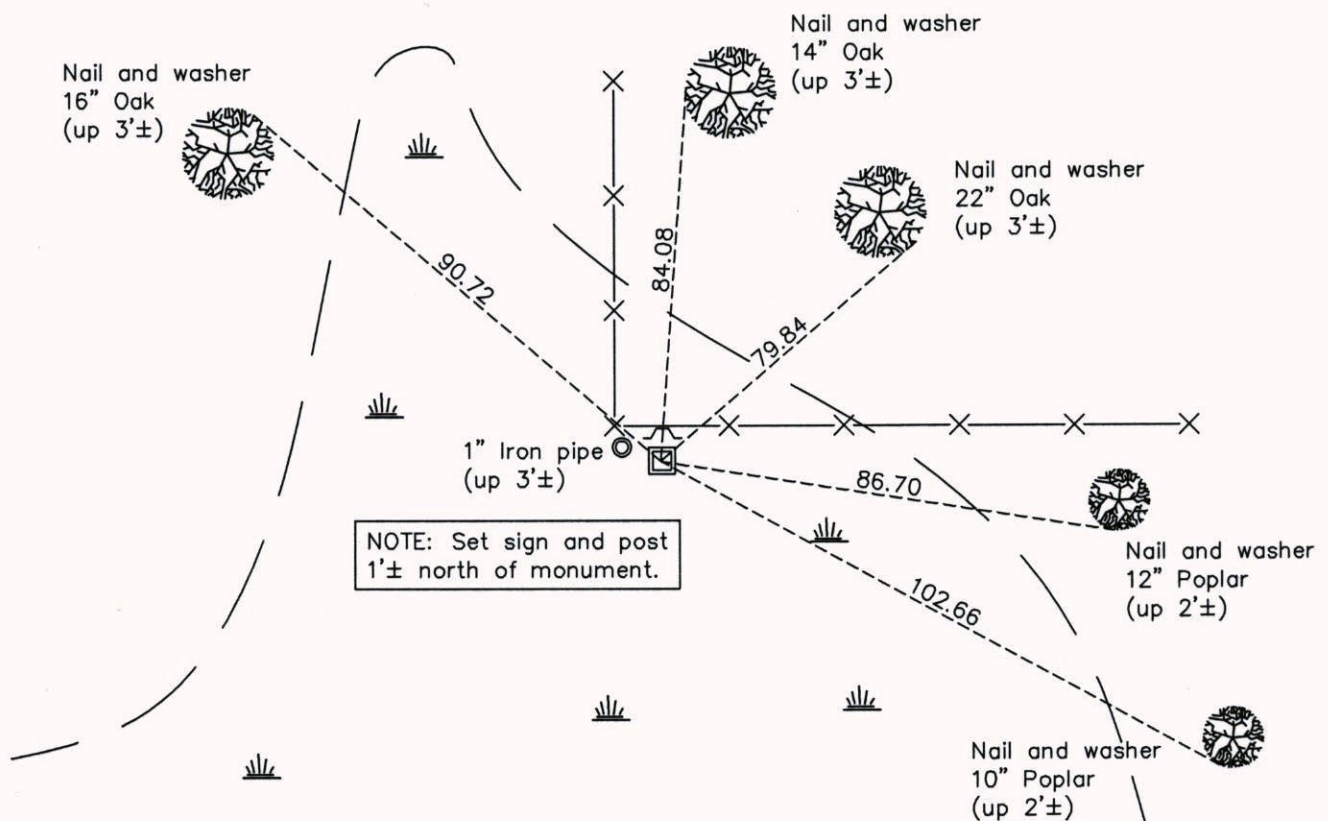
North 1/4 Corner of Sec. 23 Township 33 Range 24

On the 20th day of October, 1960, the described corner was evidenced by a buggy leaf spring

and to perpetuate the location of said corner, at the exact location thereof, a permanent marker was placed consisting of a cast iron monument

AND on the 1st day of February, 2012, said permanent marker was found leaning southerly. On 7/2/13 replaced w/ 2"X6' sq. steel Telspar mont. set up 1'± w/ 'County Surveyor' cap & punchmark.

Updated reference ties are as shown below.



Revision Date
9/30/14

N.A.D. 1983 Coordinates
(1996 Adjustment)

County Project Coordinates	
Northing	<u>211616.9233</u>
Easting	<u>492316.0105</u>
Date	<u>3/18/02</u>

I hereby certify that this United States public land survey monument record is correct and complete to the best of my knowledge and belief.

Larry D. Hoium Date 9/30/14

Larry D. Hoium, Anoka County Surveyor

Minnesota License Number 18165