

CERTIFICATE OF LOCATION OF GOVERNMENT CORNER

County of Anoka

State of Minnesota

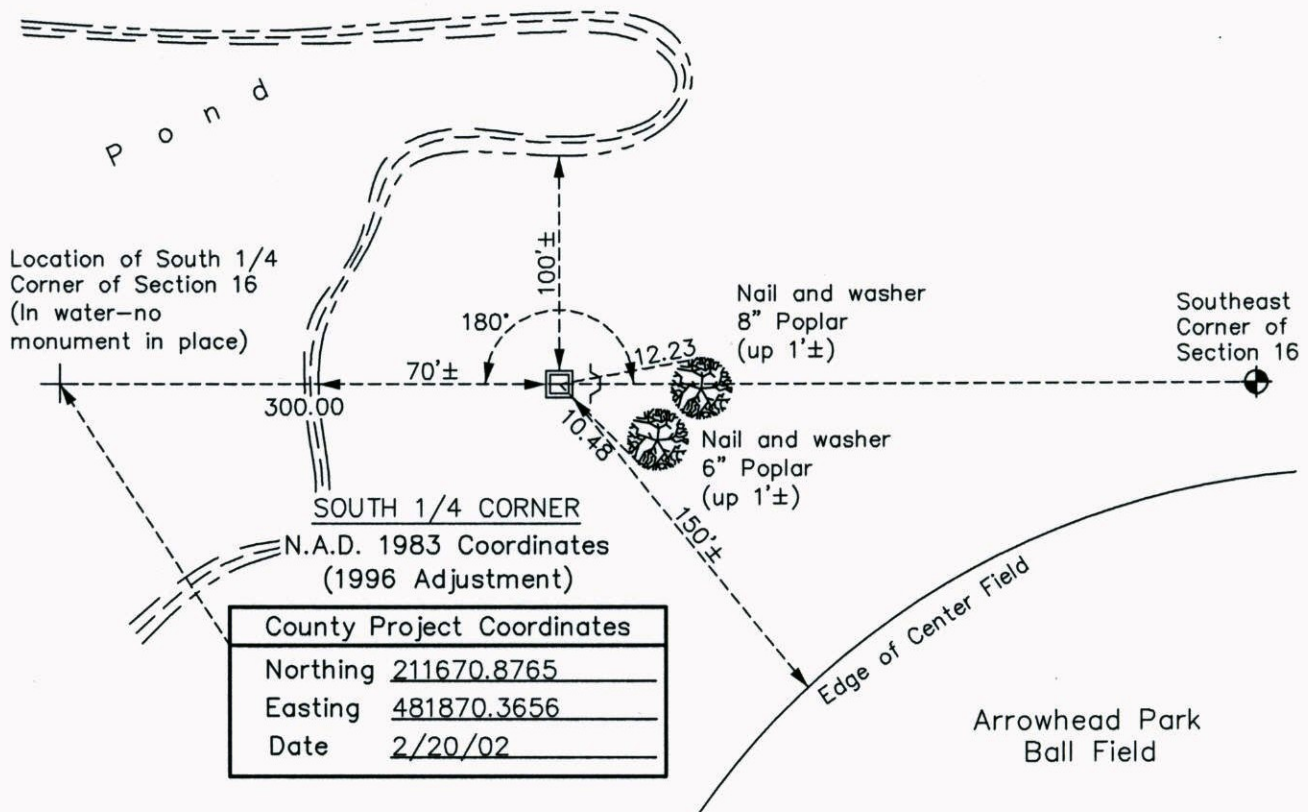
Witness Corner of Sec. 16 Township 33 Range 24
 (on south line of SE1/4)

On the 18th day of June, 2013, the described corner was evidenced by area resurvey

and to perpetuate the location of said corner, at the exact location thereof, a permanent marker was placed consisting of a 2"x5.5' square steel Telspar monument set 1'± above surface with a 'County Surveyor' cap and punchmark. Set sign and post 1'± east of monument.

AND on the ___ day of _____, _____, said permanent marker was _____

Updated reference ties are as shown below.



County Project Coordinates	
Northing	211670.8765
Easting	481870.3656
Date	2/20/02

ANOKA COUNTY SURVEYOR

Revision Date

8/26/14

WITNESS CORNER
 N.A.D. 1983 Coordinates
 (1996 Adjustment)

County Project Coordinates	
Northing	211665.8795
Easting	482170.3242
Date	6/18/13

I hereby certify that this United States public land survey monument record is correct and complete to the best of my knowledge and belief.

Larry D. Hoium Date 8/26/14

Larry D. Hoium, Anoka County Surveyor

Minnesota License Number 18165