

# CERTIFICATE OF LOCATION OF GOVERNMENT CORNER

County of Anoka

State of Minnesota

Witness Corner of Sec. 16 Township 33 Range 24

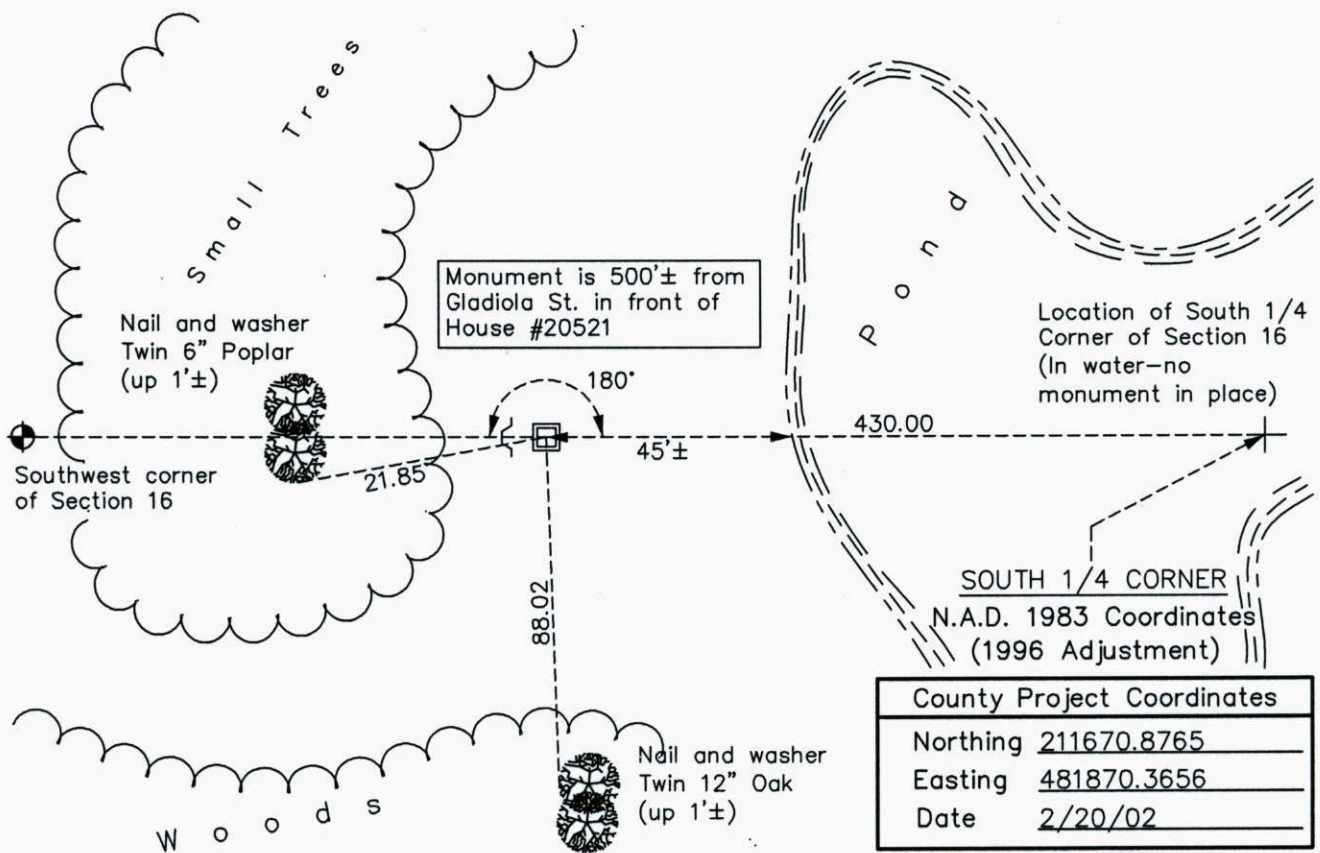
(on south line of SW1/4)

On the 18th day of June, 2013, the described corner was evidenced by area resurvey

and to perpetuate the location of said corner, at the exact location thereof, a permanent marker was placed consisting of a 2"X5' square steel Telspar monument set 1'± above surface with a 'County Surveyor' cap and punchmark. Set sign and post 1'± west of monument.

AND on the \_\_\_ day of \_\_\_\_\_, \_\_\_\_\_, said permanent marker was \_\_\_\_\_

Updated reference ties are as shown below.



WITNESS CORNER  
N.A.D. 1983 Coordinates  
(1996 Adjustment)

County Project Coordinates	
Northing	211677.9422
Easting	481440.4246
Date	6/18/13

Revision Date  
8/27/14

I hereby certify that this United States public land survey monument record is correct and complete to the best of my knowledge and belief.

*Larry D. Hoium* Date 8/27/14

Larry D. Hoium, Anoka County Surveyor  
Minnesota License Number 18165