

CERTIFICATE OF LOCATION OF GOVERNMENT CORNER

County of Anoka

State of Minnesota

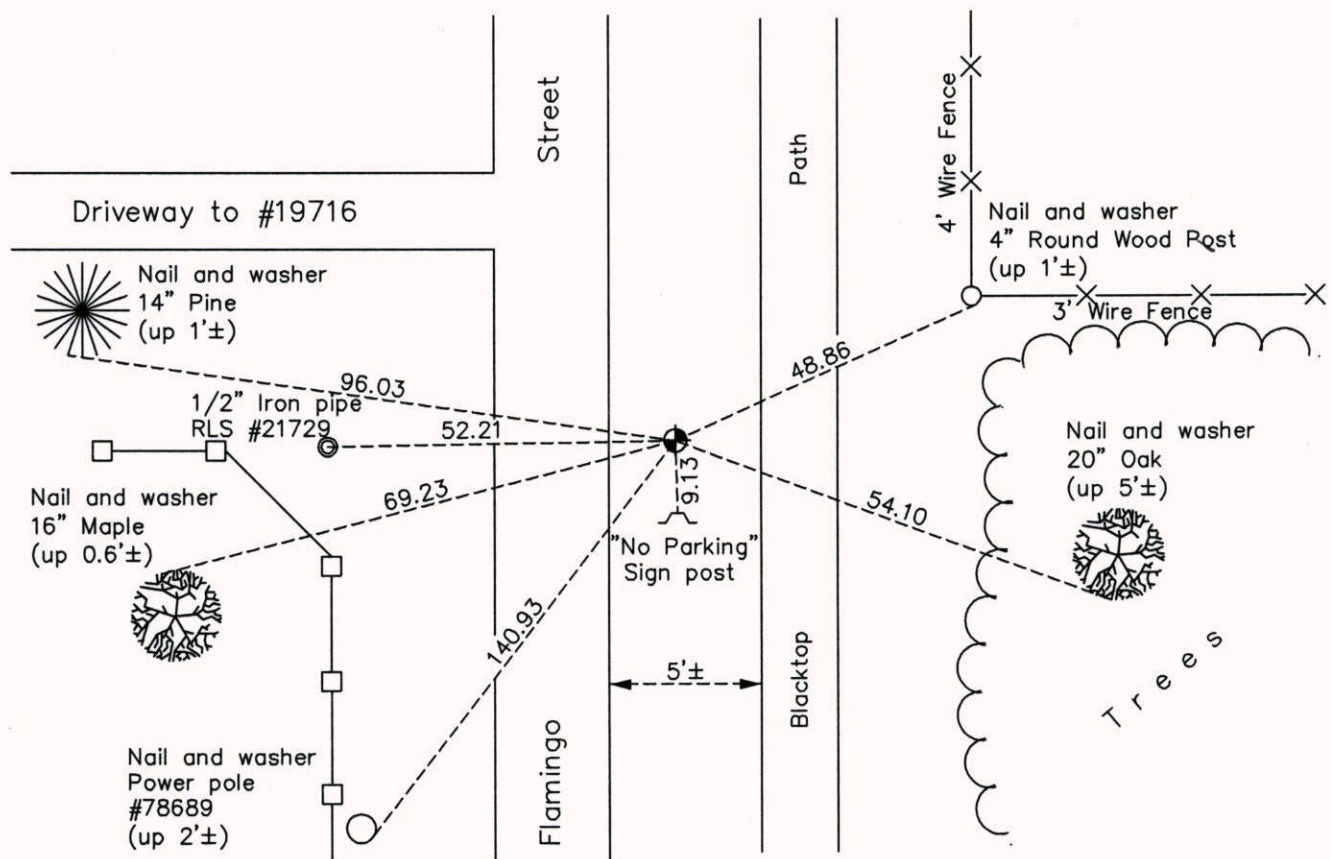
Northeast Corner of Sec. 27 Township 33 Range 24

On the 6th day of August, 1967, the described corner was evidenced by a granite monument

and to perpetuate the location of said corner, at the exact location thereof, a permanent marker was placed consisting of a cast iron monument

AND on the 3rd day of February, 2012, said permanent marker was found missing. Set new cast iron monument and updated ties on June 24, 2013.

Updated reference ties are as shown below.



N
W ANOKA COUNTY SURVEYOR E
S

Revision Date
8/18/14

N.A.D. 1983 Coordinates
(1996 Adjustment)

County Project Coordinates	
Northing	206349.4634
Easting	489787.7439
Date	6/14/01

I hereby certify that this United States public land survey monument record is correct and complete to the best of my knowledge and belief.

Larry D. Hoium Date 8/18/14

Larry D. Hoium, Anoka County Surveyor
Minnesota License Number 18165