

CERTIFICATE OF LOCATION OF GOVERNMENT CORNER

County of Anoka

State of Minnesota

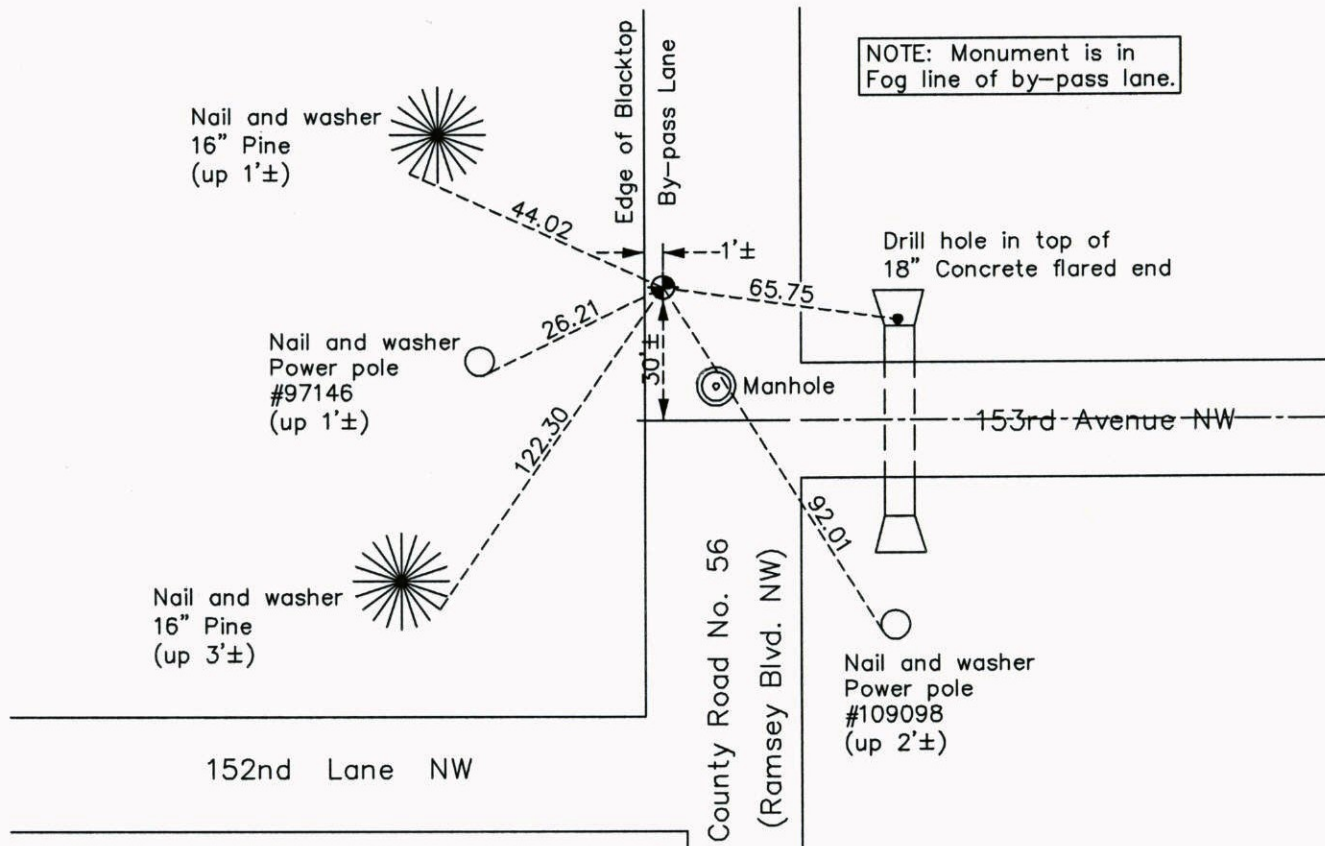
West 1/4 Corner of Sec. 22 Township 32 Range 25

On the 16th day of August, 1961, the described corner was evidenced by area resurvey

and to perpetuate the location of said corner, at the exact location thereof, a permanent marker was placed consisting of a cast iron monument

AND on the 10th day of July, 2014, said permanent marker was replaced with a new cast iron monument after road construction and the ties were updated

Updated reference ties are as shown below.



N.A.D. 1983 Coordinates
(1996 Adjustment)

County Project Coordinates	
Northing	177745.3882
Easting	452806.2216
Date	12/17/99

Revision Date
10/07/14

I hereby certify that this United States public land survey monument record is correct and complete to the best of my knowledge and belief.

Larry D. Hoium Date 10/07/14

Larry D. Hoium, Anoka County Surveyor

Minnesota License Number 18165