

CERTIFICATE OF LOCATION OF GOVERNMENT CORNER

County of Anoka

State of Minnesota

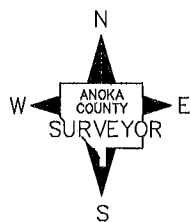
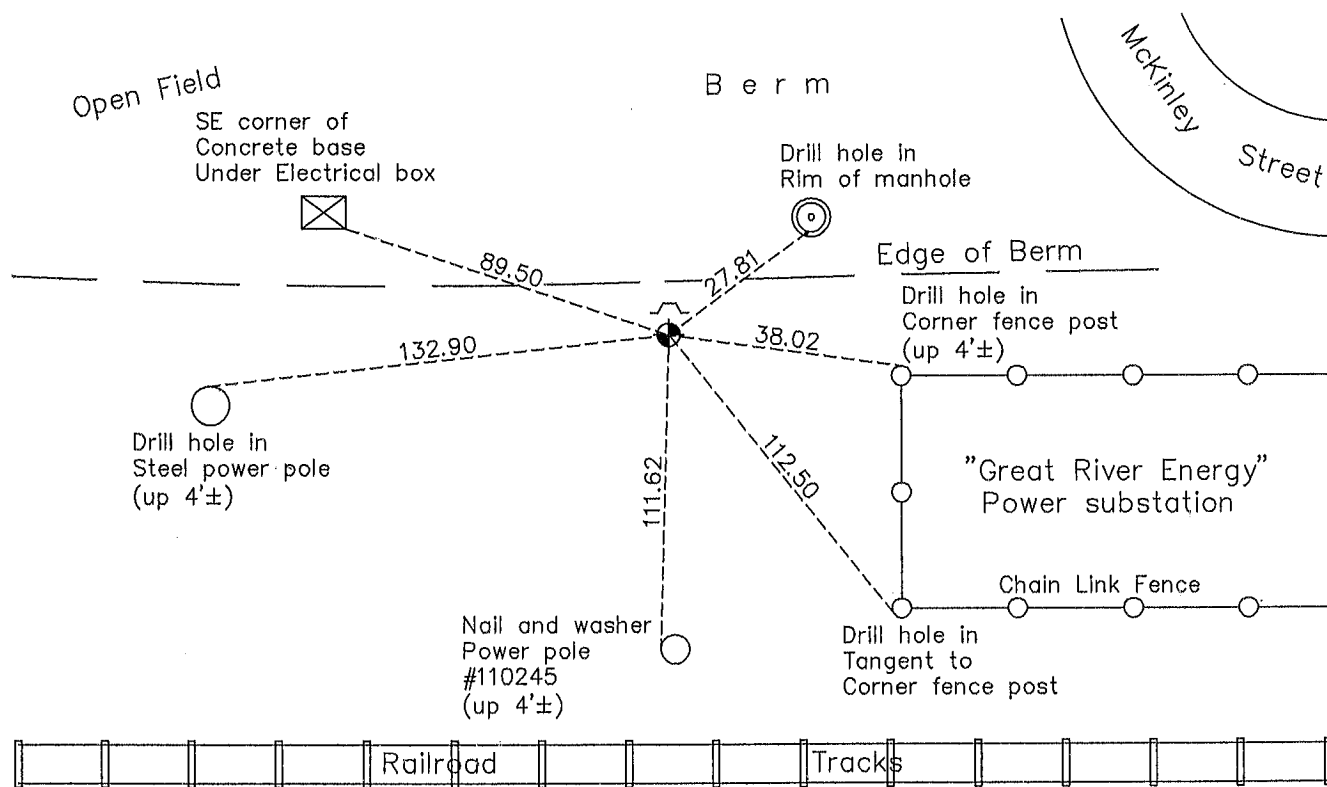
Center Corner of Sec. 35 Township 32 Range 25

On the 3rd day of October, 1962, the described corner was evidenced by area resurvey

and to perpetuate the location of said corner, at the exact location thereof, a permanent marker was placed consisting of a Judicial cast iron monument down 1'± with a sign and post on the north side

AND on the 4th day of October, 2013, said permanent marker was found and the ties were updated

Updated reference ties are as shown below.



Revision Date
3/25/14

N.A.D. 1983 Coordinates
(1996 Adjustment)

County Project Coordinates	
Northing	167180.1096
Easting	460635.4627
Date	4/06/00

I hereby certify that this United States public land survey monument record is correct and complete to the best of my knowledge and belief.

Larry D. Holm Date 3/25/14

Larry D. Holm, Anoka County Surveyor

Minnesota License Number 18165