

# CERTIFICATE OF LOCATION OF GOVERNMENT CORNER

County of Anoka

State of Minnesota

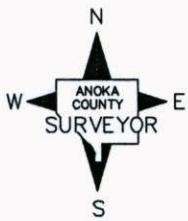
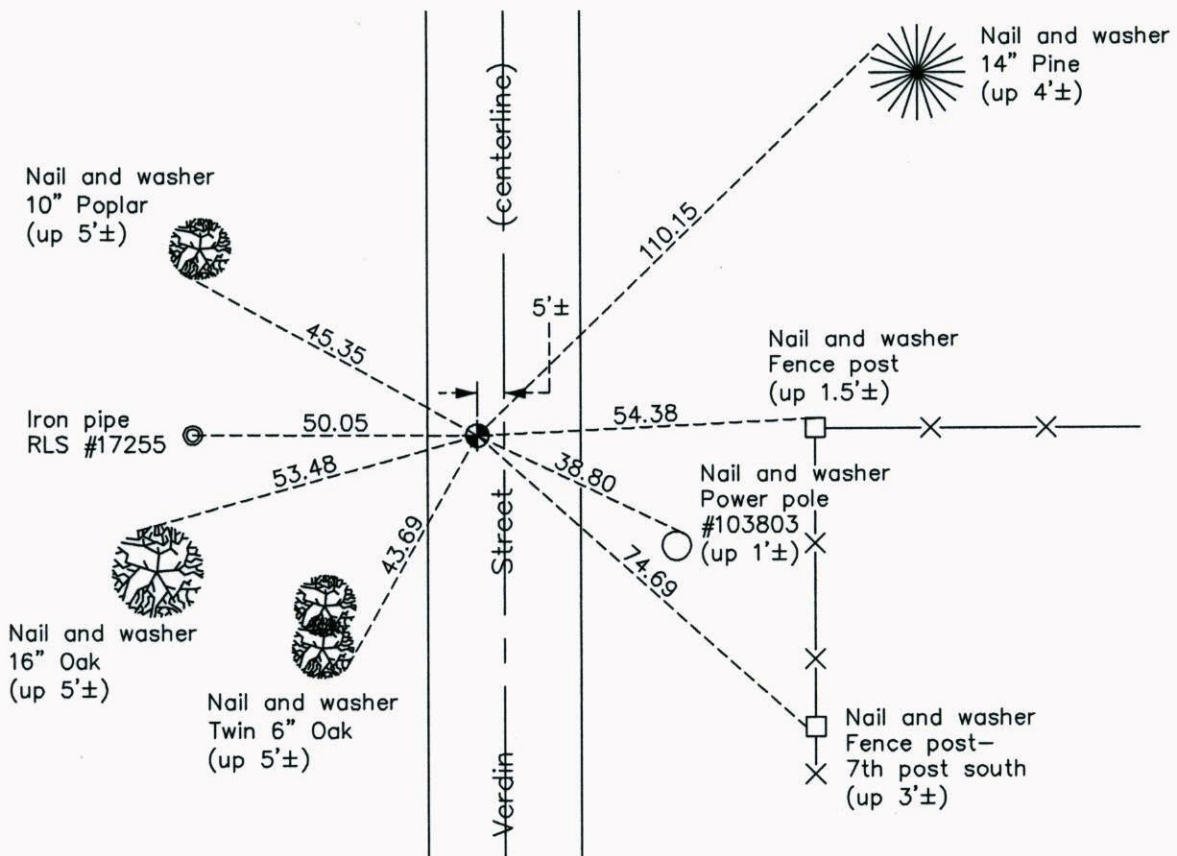
## Northeast Corner of Sec. 28 Township 34 Range 24

On the 9th day of May, 1969, the described corner was evidenced by area resurvey

and to perpetuate the location of said corner, at the exact location thereof, a permanent marker was placed consisting of a cast iron monument

AND on the 23rd day of April, 2014, said permanent marker was found broken. Replaced with a new cast iron monument and updated ties.

Updated reference ties are as shown below.



Revision Date  
9/30/14

N.A.D. 1983 Coordinates  
(1996 Adjustment)

County Project Coordinates	
Northing	<u>237978.2926</u>
Easting	<u>484495.7738</u>
Date	<u>4/24/03</u>

I hereby certify that this United States public land survey monument record is correct and complete to the best of my knowledge and belief.

*Larry D. Hoium* Date 9/30/14

Larry D. Hoium, Anoka County Surveyor  
Minnesota License Number 18165