

# CERTIFICATE OF LOCATION OF GOVERNMENT CORNER

County of Anoka

State of Minnesota

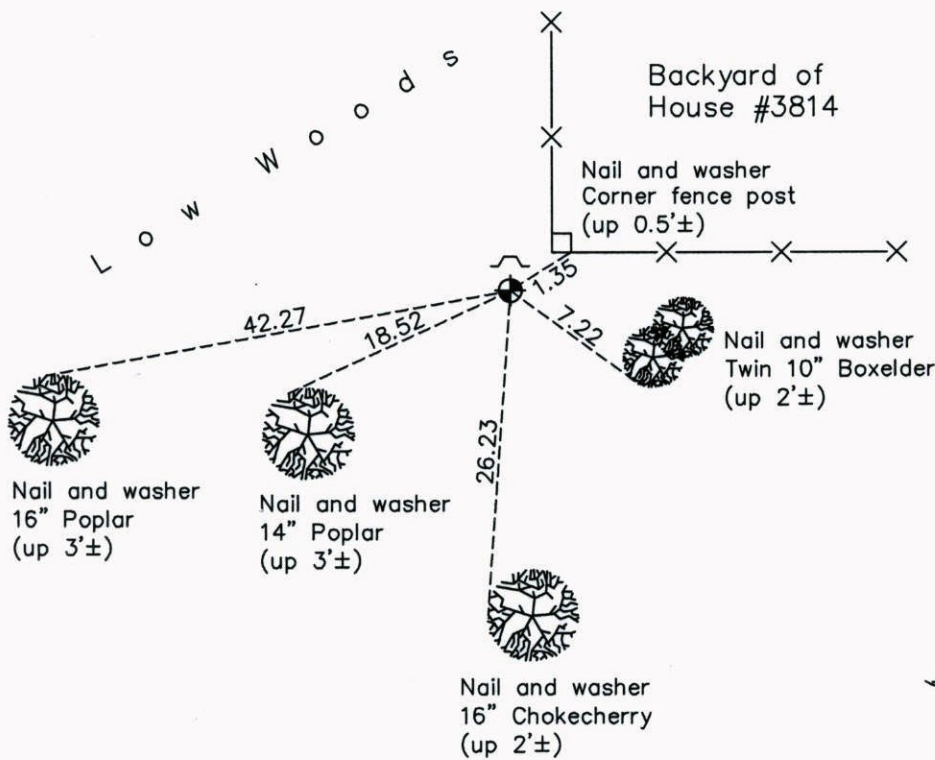
## North 1/4 Corner of Sec. 2 Township 31 Range 23

On the 2nd day of August, 1995, the described corner was evidenced by area resurvey

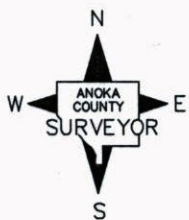
and to perpetuate the location of said corner, at the exact location thereof, a permanent marker was placed consisting of a cast iron monument with a sign and post on the north side

AND on the 30th day of June, 2014, said permanent marker was found up 0.1'± and the ties were updated

Updated reference ties are as shown below.



O P E N



Revision Date  
12/15/14

N.A.D. 1983 Coordinates  
(1996 Adjustment)

County Project Coordinates	
Northing	164203.9002
Easting	524104.1266
Date	11/04/99

I hereby certify that this United States public land survey monument record is correct and complete to the best of my knowledge and belief.

*Larry D. Hoium* Date 12/15/14

Larry D. Hoium, Anoka County Surveyor

Minnesota License Number 18165