

CERTIFICATE OF LOCATION OF GOVERNMENT CORNER

County of Anoka

State of Minnesota

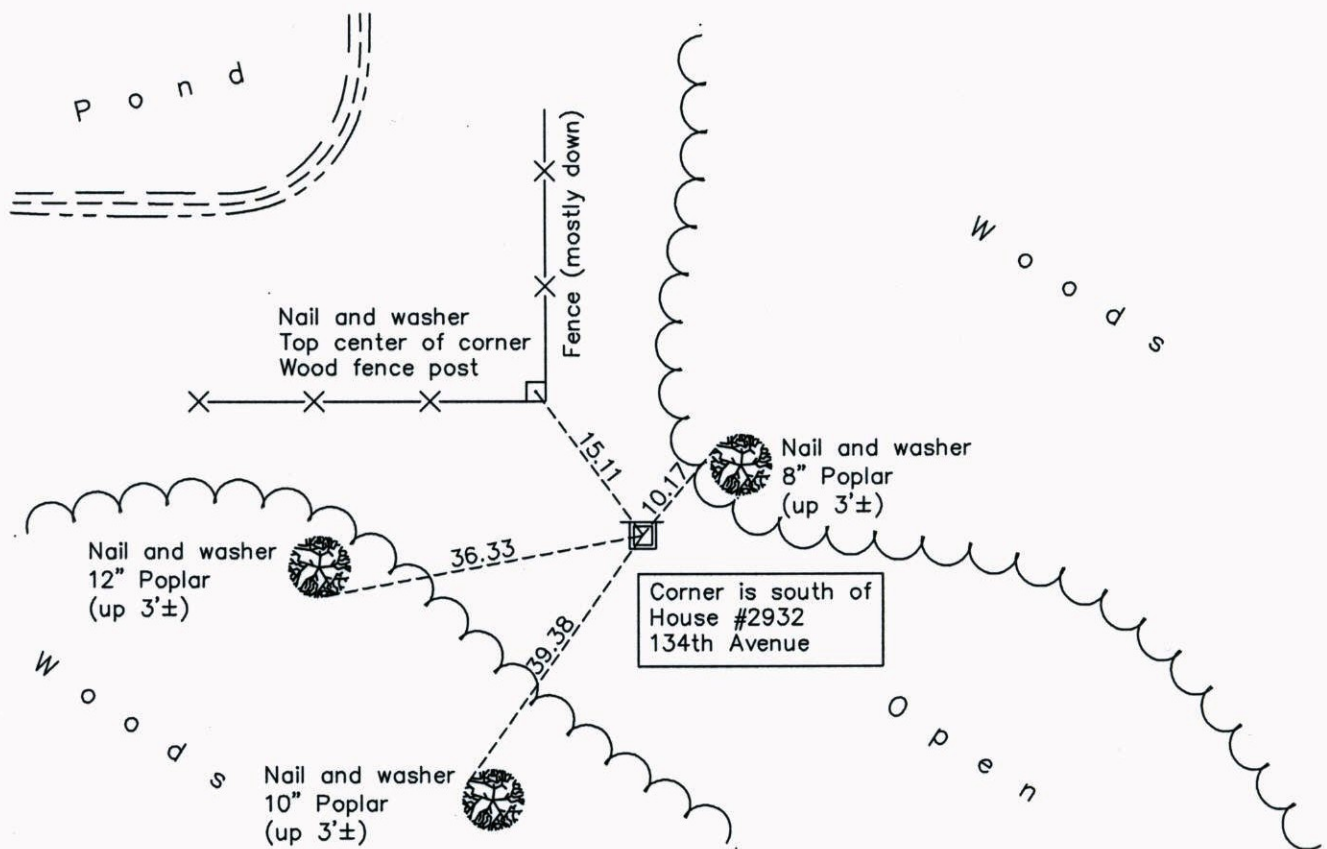
North 1/4 Corner of Sec. 3 Township 31 Range 23

On the 23rd day of March, 1971, the described corner was evidenced by a 1" iron pipe

and to perpetuate the location of said corner, at the exact location thereof, a permanent marker was placed consisting of a red and white 2" square steel Telspar monument with a sign attached facing north

AND on the 28th day of July, 2014, said permanent marker was found and the ties were updated

Updated reference ties are as shown below.



Revision Date

12/15/14

N.A.D. 1983 Coordinates
(1996 Adjustment)

County Project Coordinates	
Northing	164244.8816
Easting	518816.7848
Date	2/03/00

I hereby certify that this United States public land survey monument record is correct and complete to the best of my knowledge and belief.

Larry D. Hoium Date 12/15/14

Larry D. Hoium, Anoka County Surveyor

Minnesota License Number 18165