

CERTIFICATE OF LOCATION OF GOVERNMENT CORNER

County of Anoka

State of Minnesota

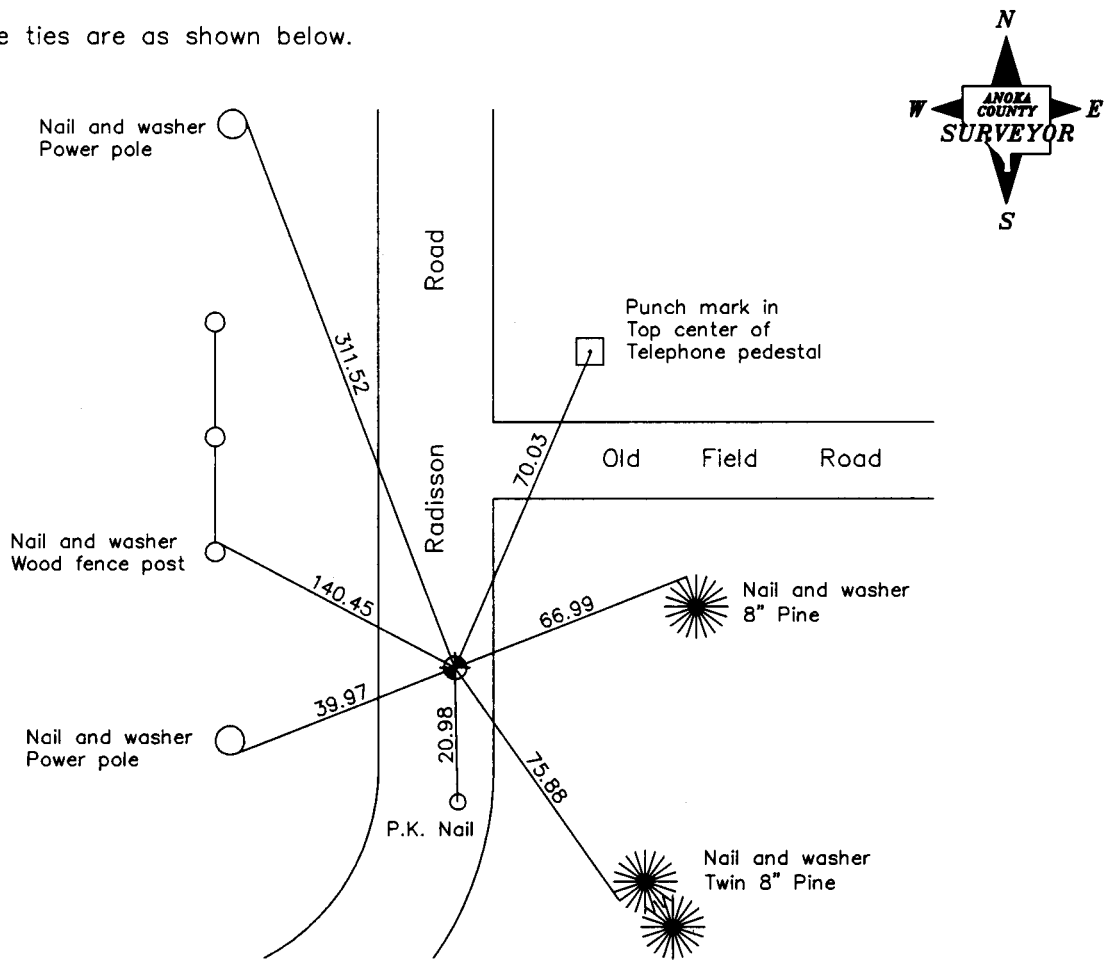
North 1/4 Corner of Sec. 4 Township 31 Range 23

On the 6th day of April, 1962, the described corner was evidenced by a 1/2" iron pipe on the surface and a concrete wheel with iron rod in center down 1.5'±

and to perpetuate the location of said corner, at the exact location thereof, a permanent marker was placed consisting of a cast iron monument

AND on the 2nd day of May, 2006, said permanent marker was found and the ties were updated

Updated reference ties are as shown below.



Revised date
7/28/95
10/27/98
5/02/06

N.A.D. 1983 Coordinates (1996 Adjustment)	
County Project Coordinates	
Northing	<u>164233.6595</u>
Easting	<u>513569.5885</u>
Date	<u>10/27/98</u>

I hereby certify that this United States public land survey monument record is correct and complete to the best of my knowledge and belief.

Larry D. Hoium Date 5/02/06

Larry D. Hoium, Anoka County Surveyor

Minnesota License Number 18165