

CERTIFICATE OF LOCATION OF GOVERNMENT CORNER

County of Anoka

State of Minnesota

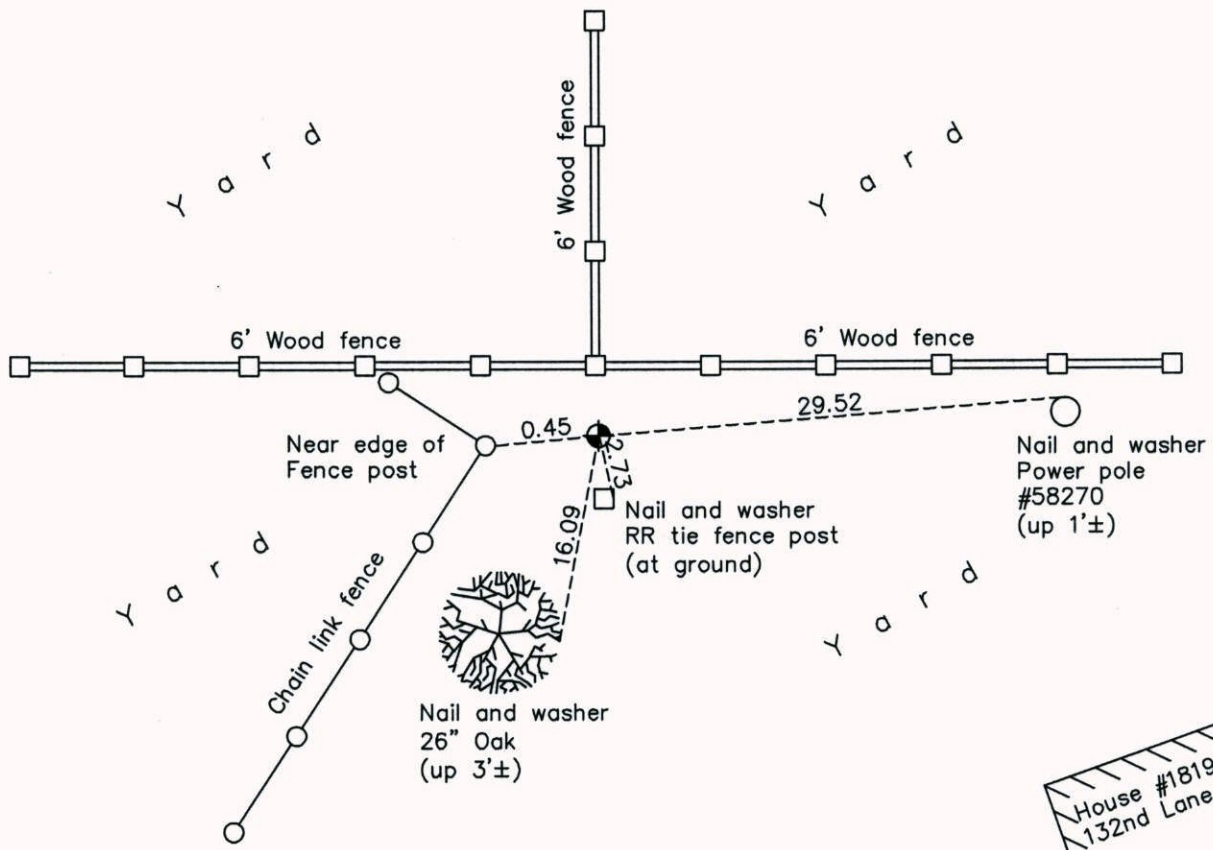
Northwest Corner of Sec. 4 Township 31 Range 23

On the 25th day of July, 1960, the described corner was evidenced by a 1" iron pipe

and to perpetuate the location of said corner, at the exact location thereof, a permanent marker was placed consisting of a cast iron monument

AND on the 13th day of May, 2014, said permanent marker was found down 0.5'± and the ties were updated

Updated reference ties are as shown below.



House #1819
132nd Lane NE



Revision Date
12/16/14

N.A.D. 1983 Coordinates
(1996 Adjustment)

County Project Coordinates	
Northing	164252.3389
Easting	510928.5623
Date	10/28/98

I hereby certify that this United States public land survey monument record is correct and complete to the best of my knowledge and belief.

Larry D. Hoium Date 12/16/14

Larry D. Hoium, Anoka County Surveyor
Minnesota License Number 18165