

# CERTIFICATE OF LOCATION OF GOVERNMENT CORNER

County of Anoka

State of Minnesota

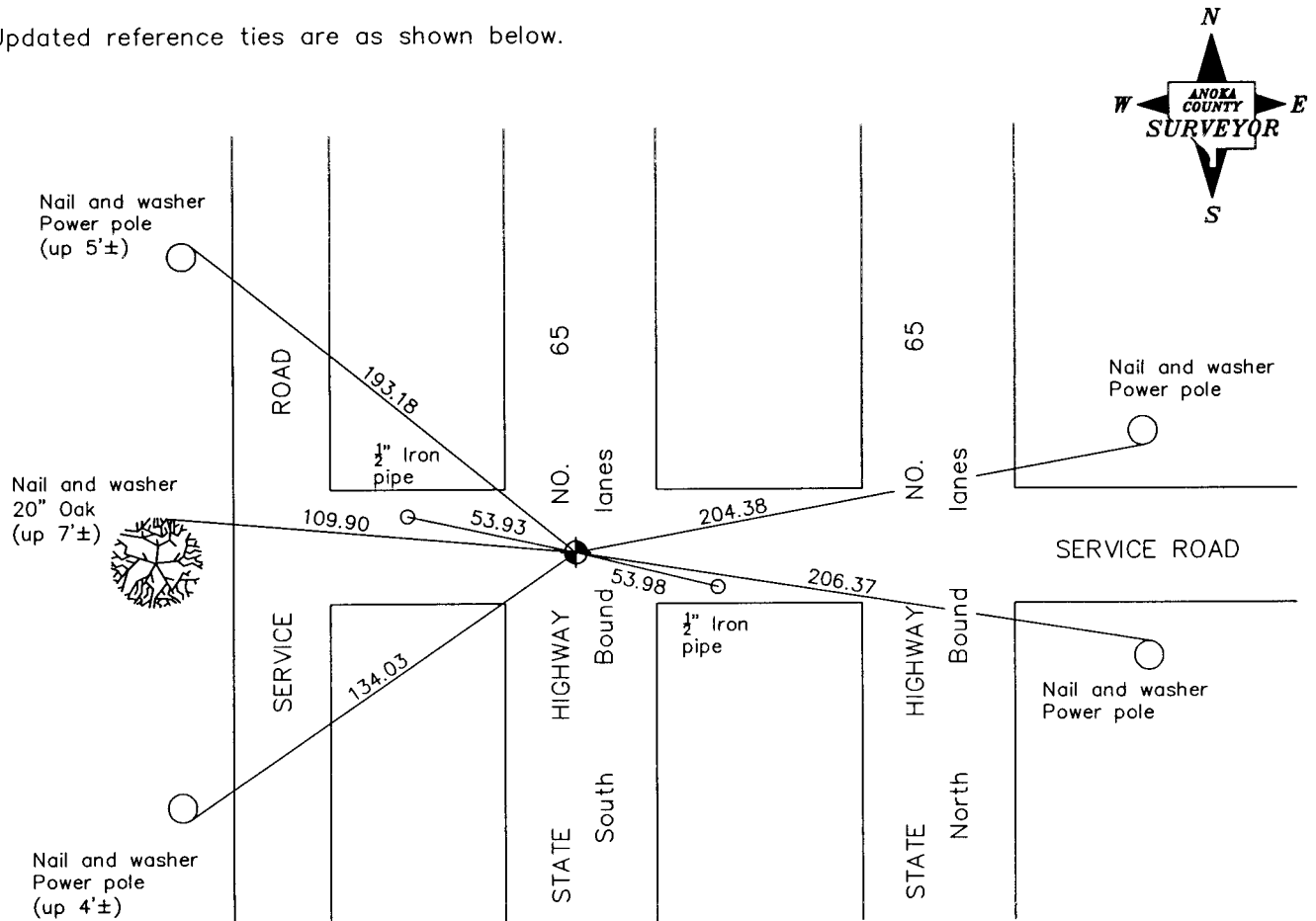
North 1/4 Corner of Sec. 5 Township 31 Range 23

On the 24th day of September, 1962, the described corner was evidenced by area resurvey

and to perpetuate the location of said corner, at the exact location thereof, a permanent marker was placed consisting of a cast iron monument

AND on the 29th day of August, 2006, said permanent marker was not found and a 1/2" iron pipe was set flush using area resurvey

Updated reference ties are as shown below.



Revised date

7/11/90
7/18/95
4/11/96
Reset 8/29/06

N.A.D. 1983 Coordinates  
(1996 Adjustment)

County Project Coordinates	
Northing	164261.8282
Easting	508273.2439
Date	8/29/06

I hereby certify that this United States public land survey monument record is correct and complete to the best of my knowledge and belief.

Date 6/28/07  
Larry D. Hoium, Anoka County Surveyor  
 Minnesota License Number 18165