

CERTIFICATE OF LOCATION OF GOVERNMENT CORNER

County of Anoka

State of Minnesota

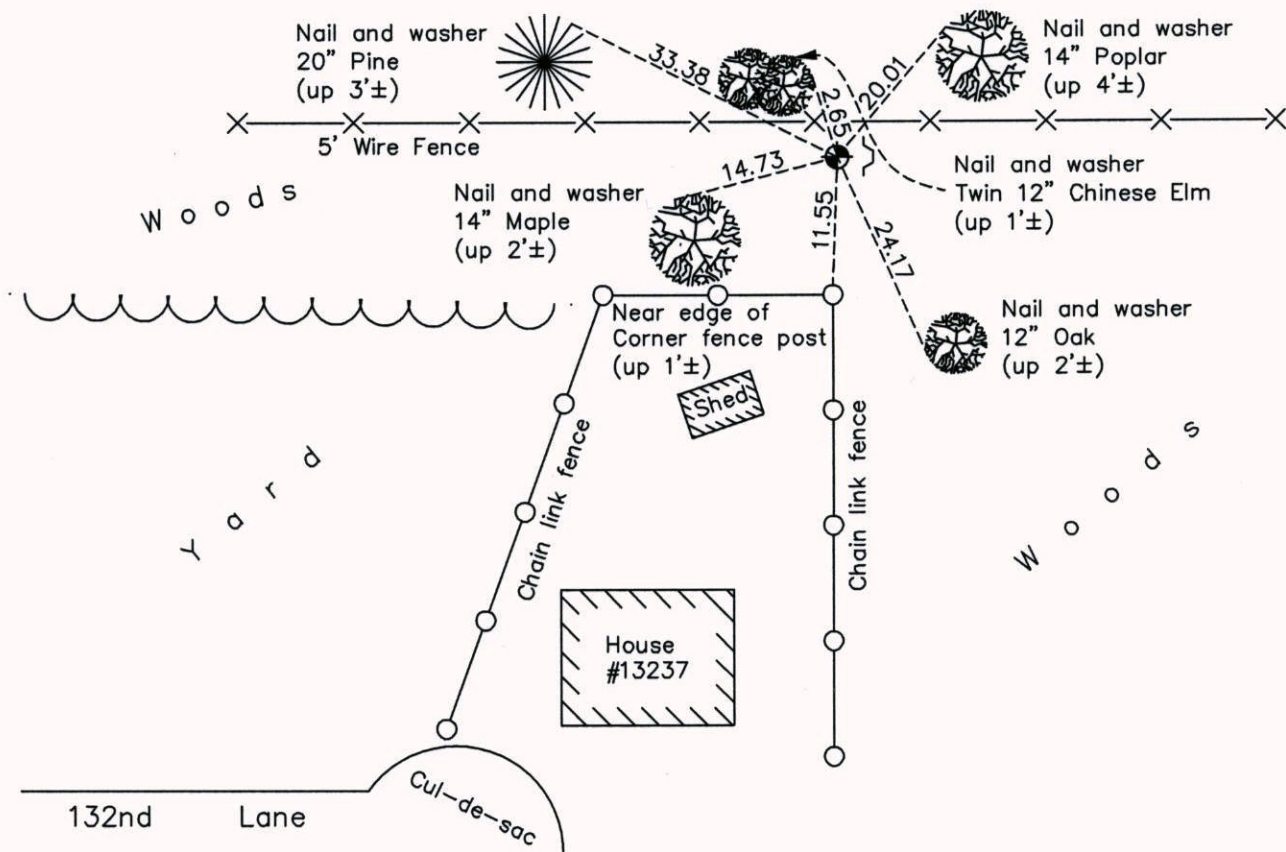
Northwest Corner of Sec. 5 Township 31 Range 23

On the 3rd day of April, 1963, the described corner was evidenced by a 1/2" iron pipe

and to perpetuate the location of said corner, at the exact location thereof, a permanent marker was placed consisting of a cast iron monument with a sign and post on the east side

AND on the 13th day of May, 2014, said permanent marker was found down 0.5'± and the ties were updated

Updated reference ties are as shown below.



Revision Date

12/16/14

N.A.D. 1983 Coordinates
(1996 Adjustment)

County Project Coordinates	
Northing	164256.7597
Easting	505651.5522
Date	11/09/98

I hereby certify that this United States public land survey monument record is correct and complete to the best of my knowledge and belief.

Larry D. Hoium Date 12/16/14

Larry D. Hoium, Anoka County Surveyor
Minnesota License Number 18165