

CERTIFICATE OF LOCATION OF GOVERNMENT CORNER

County of Anoka

State of Minnesota

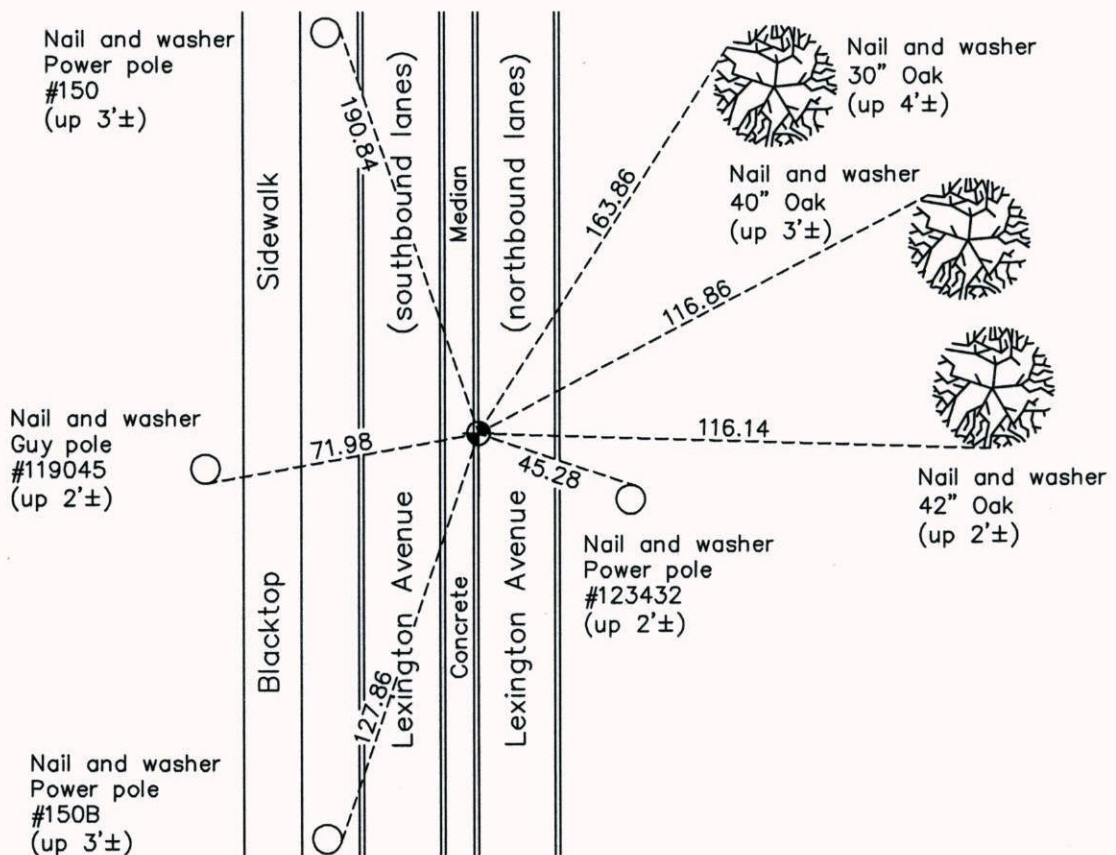
East 1/4 Corner of Sec. 2 Township 31 Range 23

On the 8th day of August, 1969, the described corner was evidenced by area resurvey

and to perpetuate the location of said corner, at the exact location thereof, a permanent marker was placed consisting of a slimline cast iron monument set in face of concrete curb

AND on the 21st day of April, 2014, said permanent marker was found and the ties
were updated

Updated reference ties are as shown below.



Revision Date

12/22/14

N.A.D. 1983 Coordinates
(1996 Adjustment)

| County Project Coordinates | |
|----------------------------|-------------|
| Northing | 161527.9840 |
| Easting | 526749.7577 |
| Date | 10/15/98 |

I hereby certify that this United States public land survey monument record is correct and complete to the best of my knowledge and belief.

Larry D. Hoium Date 12/22/14

Larry D. Hoium, Anoka County Surveyor

Minnesota License Number 18165