

CERTIFICATE OF LOCATION OF GOVERNMENT CORNER

County of Anoka

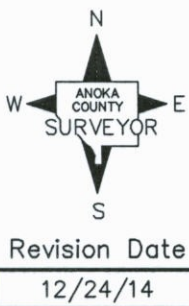
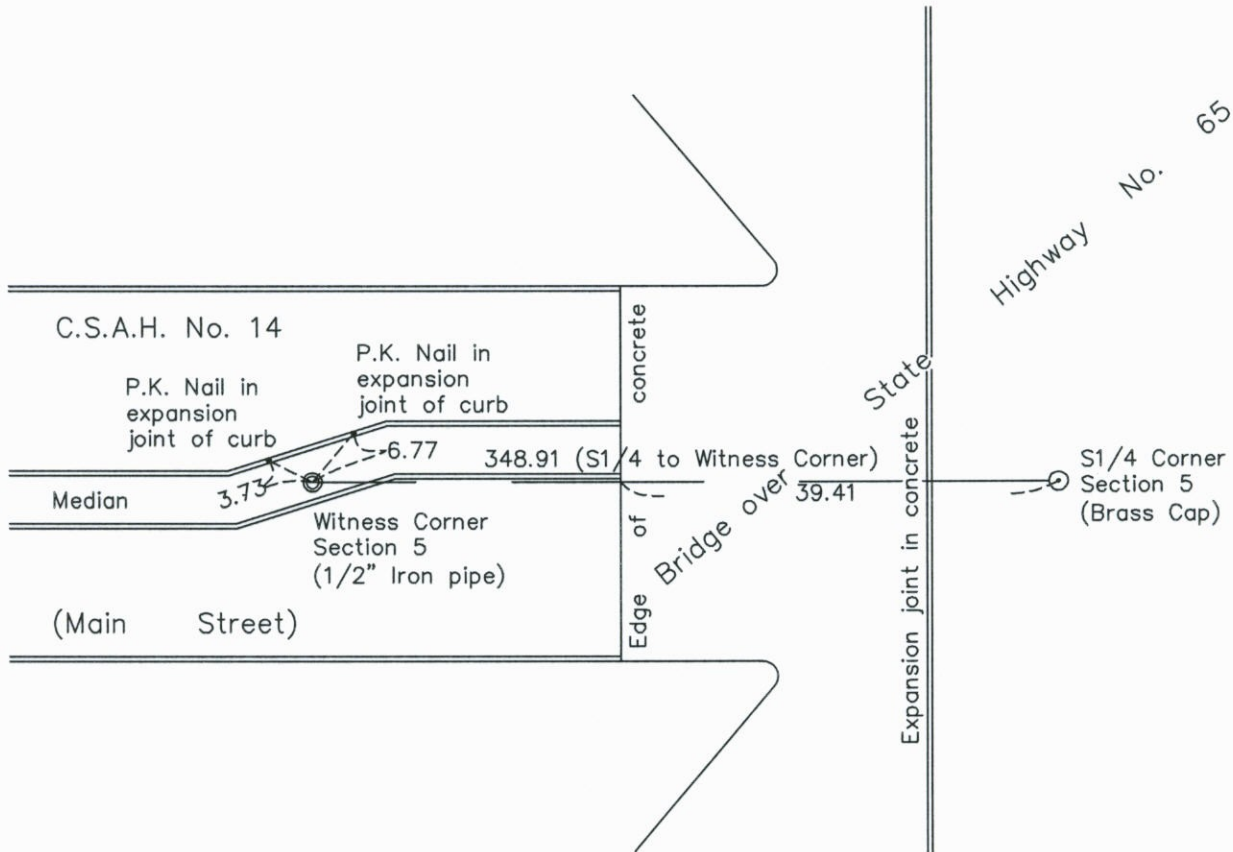
State of Minnesota

Witness Corner of Sec. 5 Township 31 Range 23
 (on south line of section)

On the 2nd day of June, 2009, the described corner was evidenced by a point set on line between the South 1/4 corner and the Southwest corner of Section 5 and to perpetuate the location of said corner, at the exact location thereof, a permanent marker was placed consisting of a 1/2" iron pipe set flush in concrete median

AND on the 9th day of May, 2014, said permanent marker was found and the ties were updated

Updated reference ties are as shown below.



N.A.D. 1983 Coordinates
 (1996 Adjustment)

County Project Coordinates	
Northing	<u>159043.1337</u>
Easting	<u>507859.3979</u>
Date	<u>6/02/09</u>

I hereby certify that this United States public land survey monument record is correct and complete to the best of my knowledge and belief.

Larry D. Hoium Date 12/24/14

Larry D. Hoium, Anoka County Surveyor
 Minnesota License Number 18165