

# CERTIFICATE OF LOCATION OF GOVERNMENT CORNER

County of Anoka

State of Minnesota

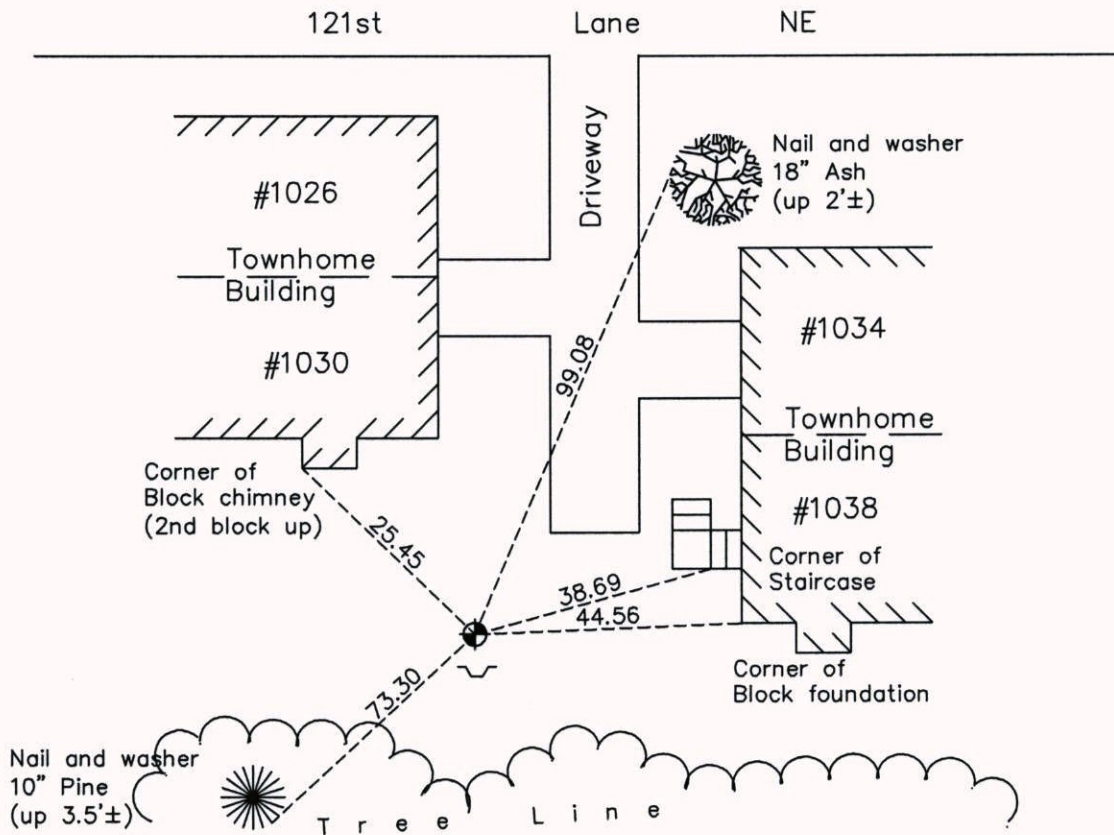
## West 1/4 Corner of Sec. 8 Township 31 Range 23

On the 6th day of February, 1964, the described corner was evidenced by a 3/4" iron pipe

and to perpetuate the location of said corner, at the exact location thereof, a permanent marker was placed consisting of a cast iron monument with a sign and post on the south side

AND on the 9th day of May, 2014, said permanent marker was found and the ties were updated

Updated reference ties are as shown below.



Revision Date  
12/26/14

N.A.D. 1983 Coordinates  
(1996 Adjustment)

County Project Coordinates	
Northing	156382.6792
Easting	505526.0422
Date	9/03/98

I hereby certify that this United States public land survey monument record is correct and complete to the best of my knowledge and belief.

*Larry D. Hoium* Date 12/26/14

Larry D. Hoium, Anoka County Surveyor  
Minnesota License Number 18165