

# CERTIFICATE OF LOCATION OF GOVERNMENT CORNER

County of Anoka

State of Minnesota

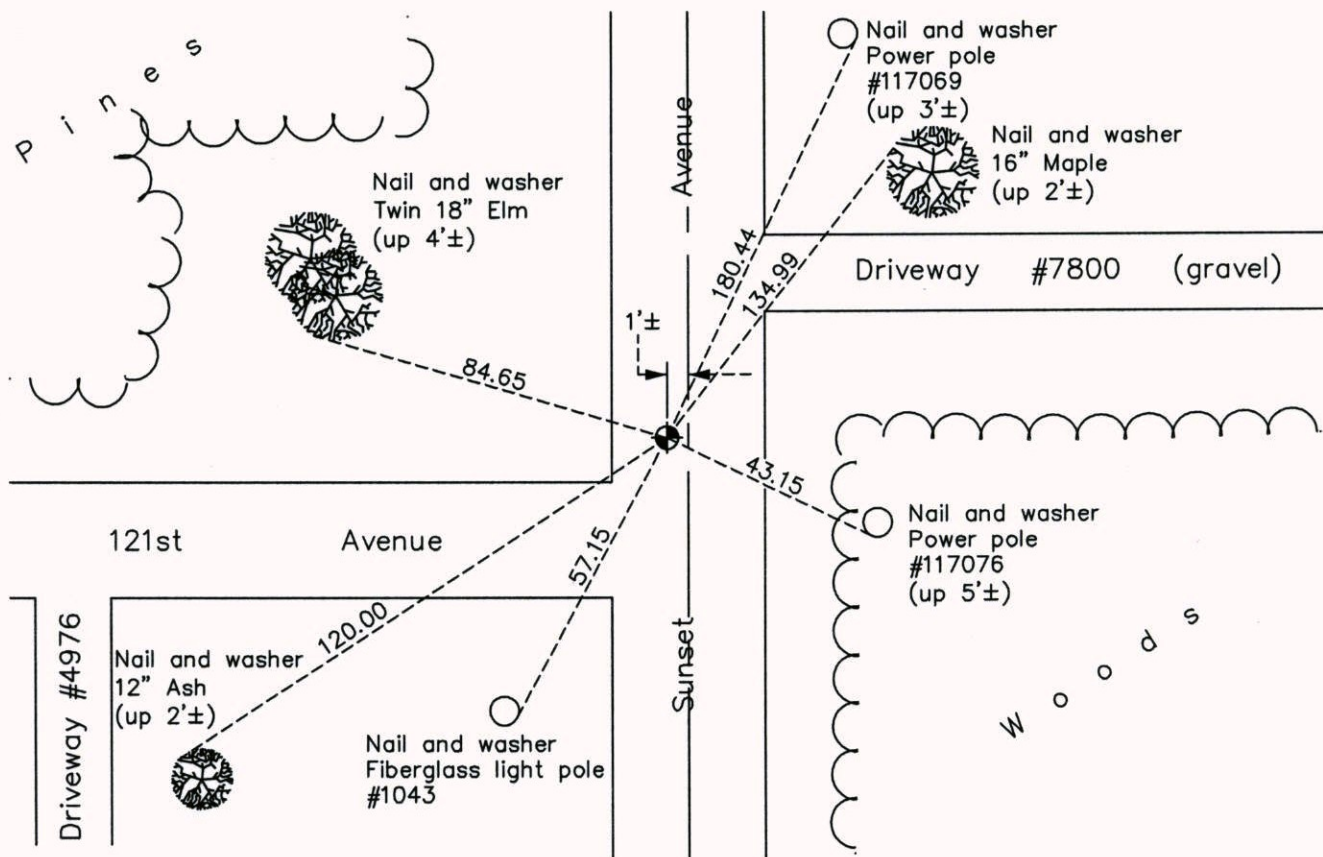
## East 1/4 Corner of Sec. 12 Township 31 Range 23

On the 31st day of August, 1960, the described corner was evidenced by a 2" iron pipe

and to perpetuate the location of said corner, at the exact location thereof, a permanent marker was placed consisting of a cast iron monument

AND on the 16th day of May, 2014, said permanent marker was found and the ties were updated

Updated reference ties are as shown below.



Revision Date  
12/26/14

N.A.D. 1983 Coordinates  
(1996 Adjustment)

County Project Coordinates	
Northing	<u>156096.3268</u>
Easting	<u>531994.2847</u>
Date	<u>6/11/98</u>

I hereby certify that this United States public land survey monument record is correct and complete to the best of my knowledge and belief.

*Larry D. Hoium* Date 12/26/14

Larry D. Hoium, Anoka County Surveyor  
Minnesota License Number 18165