

CERTIFICATE OF LOCATION OF GOVERNMENT CORNER

County of Anoka

State of Minnesota

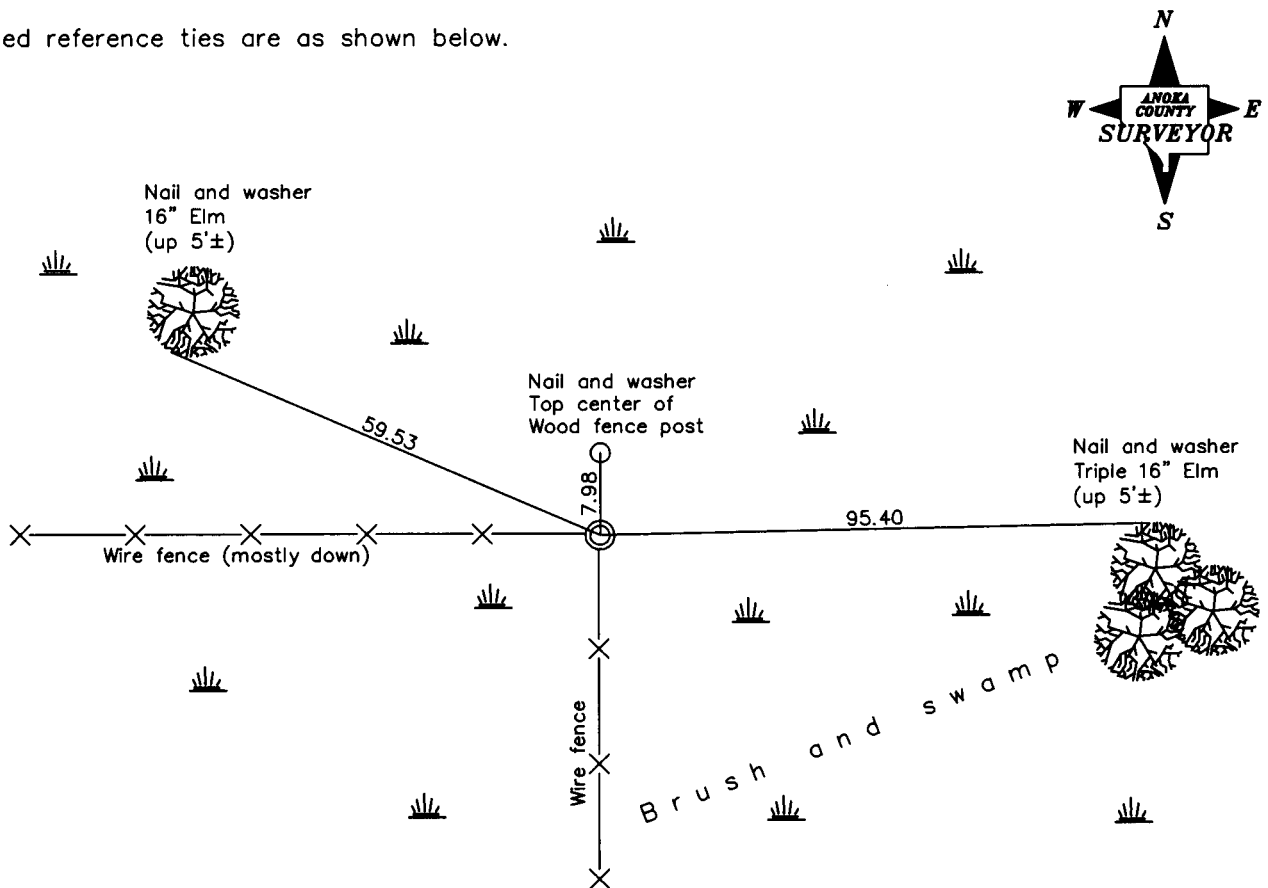
North 1/4 Corner of Sec. 13 Township 31 Range 23

On the 19th day of November, 1964, the described corner was evidenced by area resurvey

and to perpetuate the location of said corner, at the exact location thereof, a permanent marker was placed consisting of a red and white iron pipe

AND on the 23rd day of August, 2006, said permanent marker was found broken off up 0.5' and the ties were updated

Updated reference ties are as shown below.



Revised date

1995
1999
8/23/06

N.A.D. 1983 Coordinates
(1996 Adjustment)

County Project Coordinates
Northing <u>153505.8269</u>
Easting <u>529378.8726</u>
Date <u>11/16/99</u>

I hereby certify that this United States public land survey monument record is correct and complete to the best of my knowledge and belief.

Larry D. Hoium Date 8/23/06
 _____, Anoka County Surveyor
 Minnesota License Number 18165