

CERTIFICATE OF LOCATION OF GOVERNMENT CORNER

County of Anoka

State of Minnesota

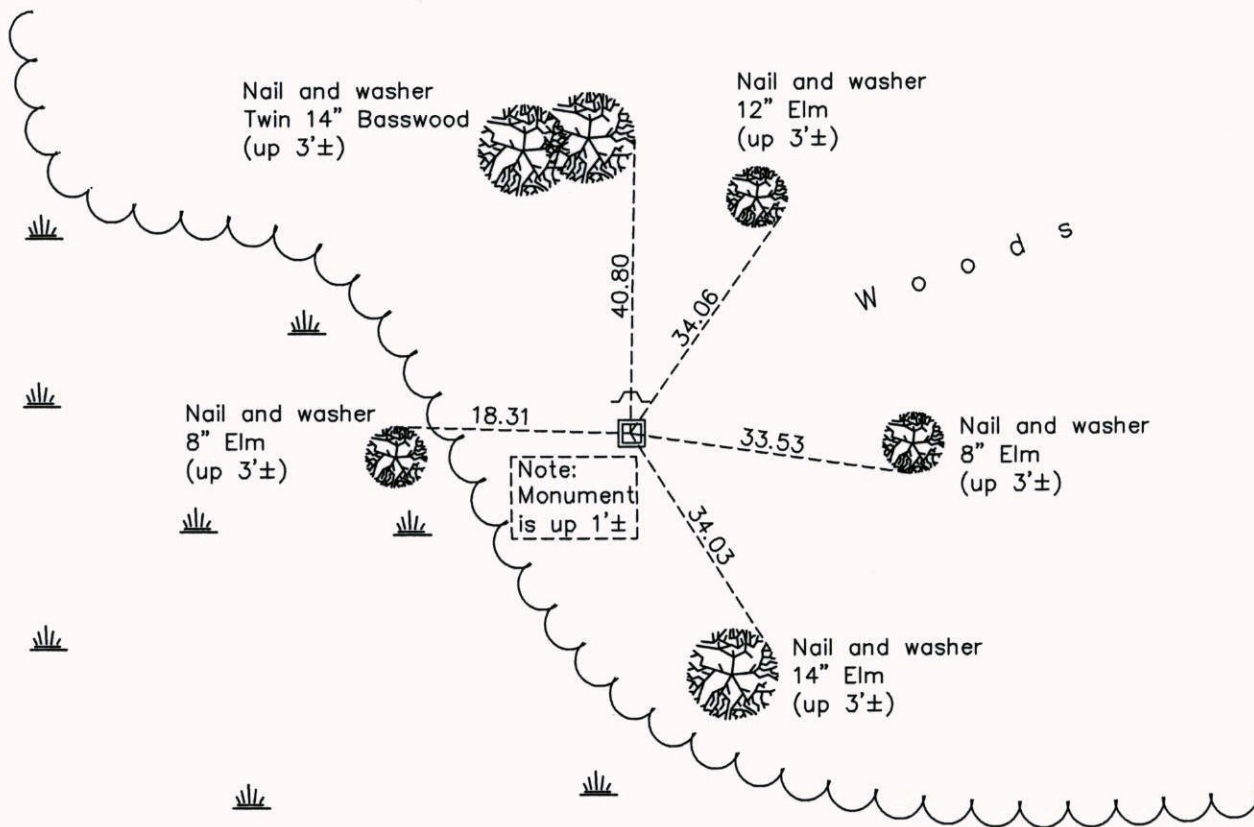
Southwest Corner of Sec. 11 Township 31 Range 23

On the 10th day of September, 1963, the described corner was evidenced by a concrete monument

and to perpetuate the location of said corner, at the exact location thereof, a permanent marker was placed consisting of the same concrete monument with a sign and post on the north side

AND on the 29th day of July, 2014, said permanent marker was found leaning north.
Replaced w/ 2"X7' sq. steel Telspar mon't. w/ 'Co. Surveyor' cap & punchmark. Ties were updated.

Updated reference ties are as shown below.



Revision Date
8/14/14

N.A.D. 1983 Coordinates
 (1996 Adjustment)

| County Project Coordinates | |
|----------------------------|--------------------|
| Northing | <u>153554.4320</u> |
| Easting | <u>521366.4381</u> |
| Date | <u>8/24/99</u> |

I hereby certify that this United States public land survey monument record is correct and complete to the best of my knowledge and belief.

Larry D. Hoium Date 8/14/14

Larry D. Hoium, Anoka County Surveyor

Minnesota License Number 18165