

CERTIFICATE OF LOCATION OF GOVERNMENT CORNER

County of Anoka

State of Minnesota

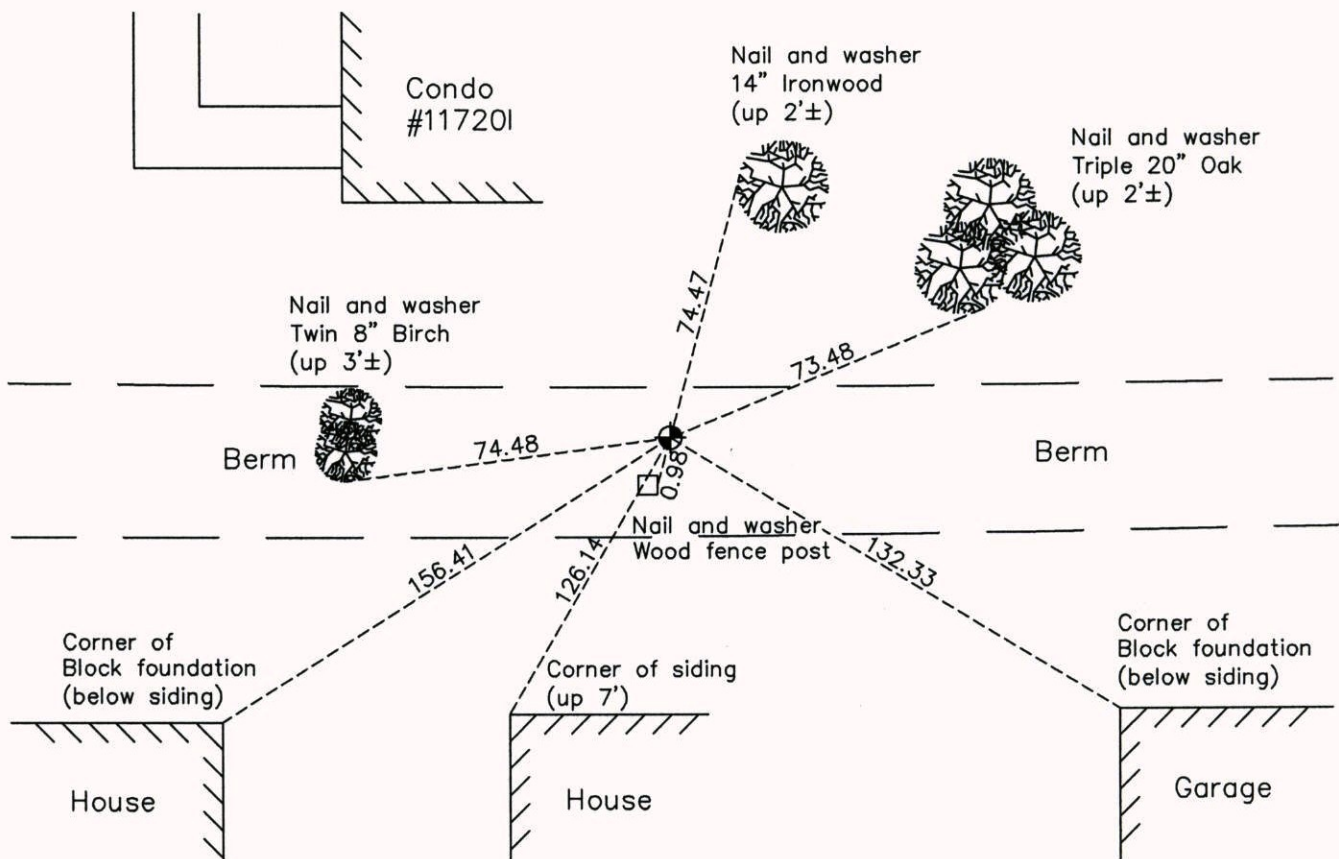
Northwest Corner of Sec. 15 Township 31 Range 23

On the 30th day of April, 1963, the described corner was evidenced by information
from an old Ridge survey

and to perpetuate the location of said corner, at the exact location thereof, a permanent marker was placed consisting of a cast iron monument

AND on the 15th day of May, 2014, said permanent marker was found down 0.4'± and
the ties were updated

Updated reference ties are as shown below.



N

 W ANOKA COUNTY SURVEYOR E
 S
 Revision Date
12/29/14

N.A.D. 1983 Coordinates
(1996 Adjustment)

County Project Coordinates	
Northing	153711.3901
Easting	516065.9227
Date	10/27/98

I hereby certify that this United States public land survey monument record is correct and complete to the best of my knowledge and belief.

Larry D. Hoium Date 12/29/14

Larry D. Hoium, Anoka County Surveyor
 Minnesota License Number 18165