

# CERTIFICATE OF LOCATION OF GOVERNMENT CORNER

County of Anoka

State of Minnesota

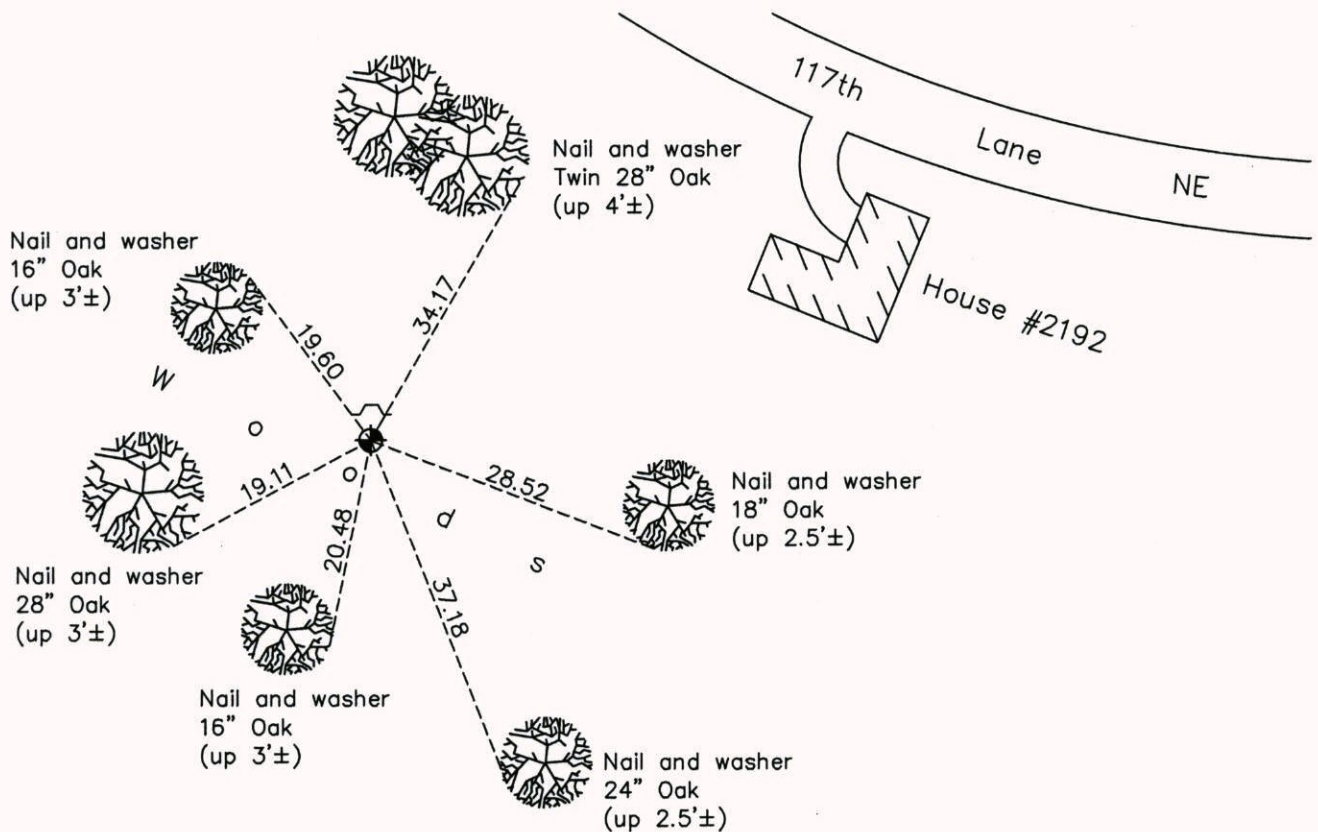
## South $\frac{1}{4}$ Corner of Sec. 9 Township 31 Range 23

On the 11th day of July, 1963, the described corner was evidenced by a 2" iron pipe

and to perpetuate the location of said corner, at the exact location thereof, a permanent marker was placed consisting of a cast iron monument with a sign and post on the north side

AND on the 14th day of May, 2014, said permanent marker was found up 0.2'± and the ties were updated

Updated reference ties are as shown below.



Revision Date

12/29/14

N.A.D. 1983 Coordinates  
(1996 Adjustment)

County Project Coordinates

Northing 153725.8542

Easting 513468.1043

Date 11/09/98

I hereby certify that this United States public land survey monument record is correct and complete to the best of my knowledge and belief.

*Larry D. Hoium*, Date 12/29/14

Larry D. Hoium, Anoka County Surveyor

Minnesota License Number 18165