

CERTIFICATE OF LOCATION OF GOVERNMENT CORNER

County of Anoka

State of Minnesota

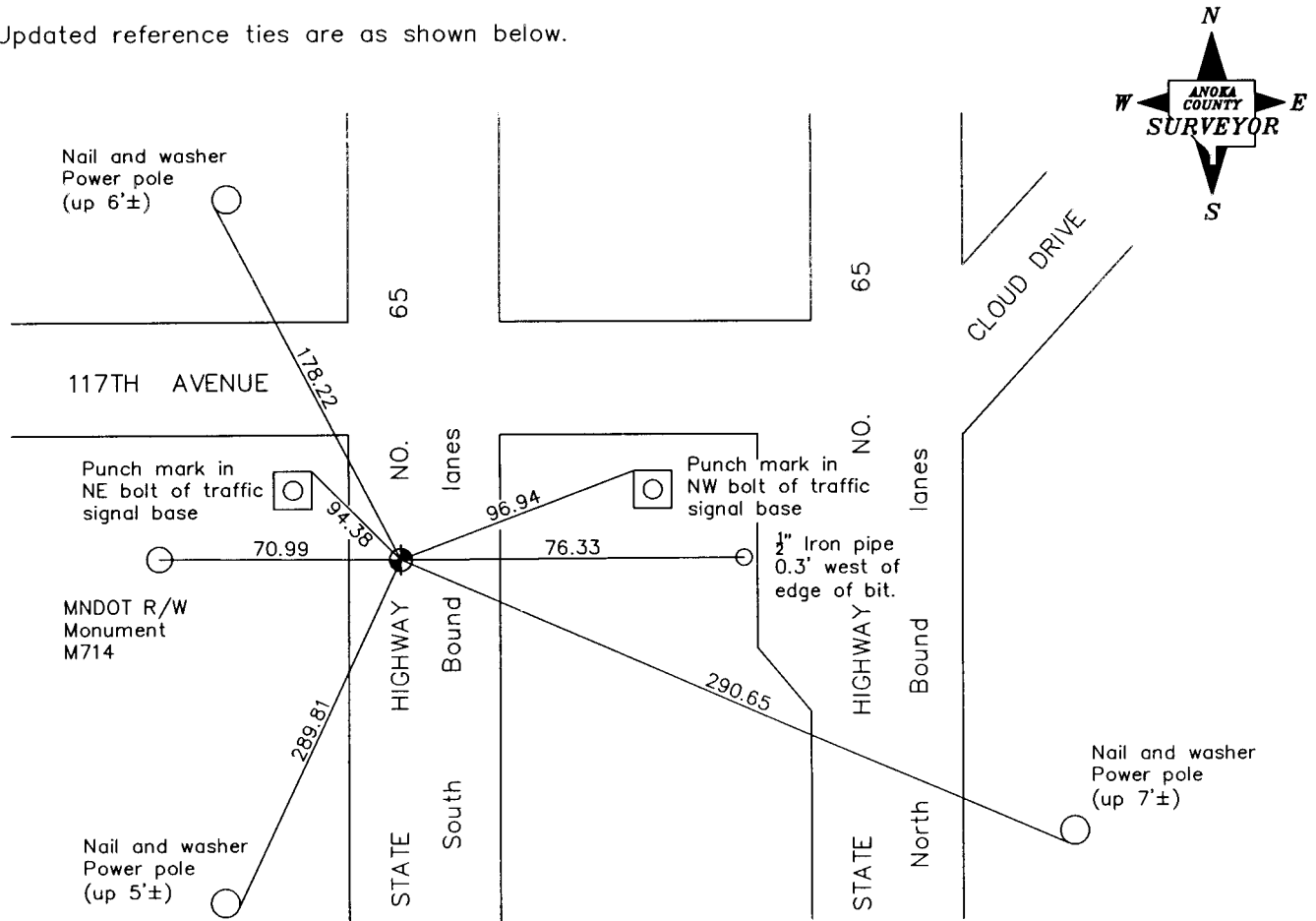
South 1/4 Corner of Sec. 8 Township 31 Range 23

On the 6th day of February, 1964, the described corner was evidenced by a P.K. nail

and to perpetuate the location of said corner, at the exact location thereof, a permanent marker was placed consisting of a P.K. nail

AND on the 30th day of August, 2006, said permanent marker was not found and a 1/2" iron pipe was set flush using area resurvey

Updated reference ties are as shown below.



Revised date

7/11/90
10/24/90
7/18/95
Reset 8/30/06

N.A.D. 1983 Coordinates
(1996 Adjustment)

County Project Coordinates	
Northing	153746.8024
Easting	508174.5936
Date	8/30/06

I hereby certify that this United States public land survey monument record is correct and complete to the best of my knowledge and belief.

Larry D. Hoium Date 6/28/07
Larry D. Hoium, Anoka County Surveyor
 Minnesota License Number 18165