

# CERTIFICATE OF LOCATION OF GOVERNMENT CORNER

County of Anoka                      State of Minnesota

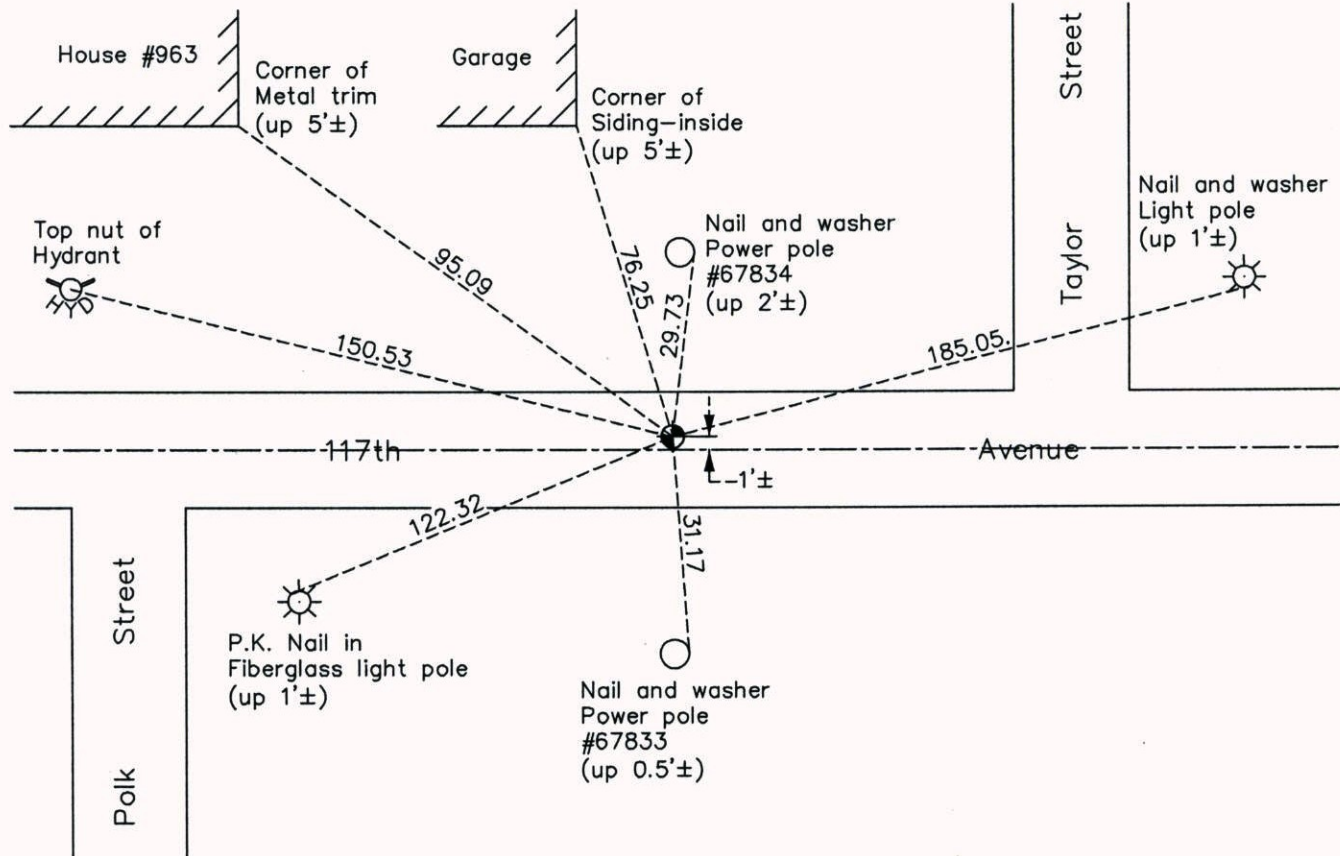
## Southeast Corner of Sec. 7 Township 31 Range 23

On the 7th day of July, 1960, the described corner was evidenced by a concrete monument

and to perpetuate the location of said corner, at the exact location thereof, a permanent marker was placed consisting of a cast iron monument

AND on the 22nd day of April, 2014, said permanent marker was found and the ties were updated

Updated reference ties are as shown below.



N  
  
 ANOKA COUNTY SURVEYOR  
 S  
 Revision Date  
1/14/15

N.A.D. 1983 Coordinates  
(1996 Adjustment)

County Project Coordinates	
Northing	153754.7163
Easting	505529.0622
Date	9/03/98

I hereby certify that this United States public land survey monument record is correct and complete to the best of my knowledge and belief.

Date 1/14/15  
 Larry D. Hoium, Anoka County Surveyor  
 Minnesota License Number 18165