

CERTIFICATE OF LOCATION OF GOVERNMENT CORNER

County of Anoka

State of Minnesota

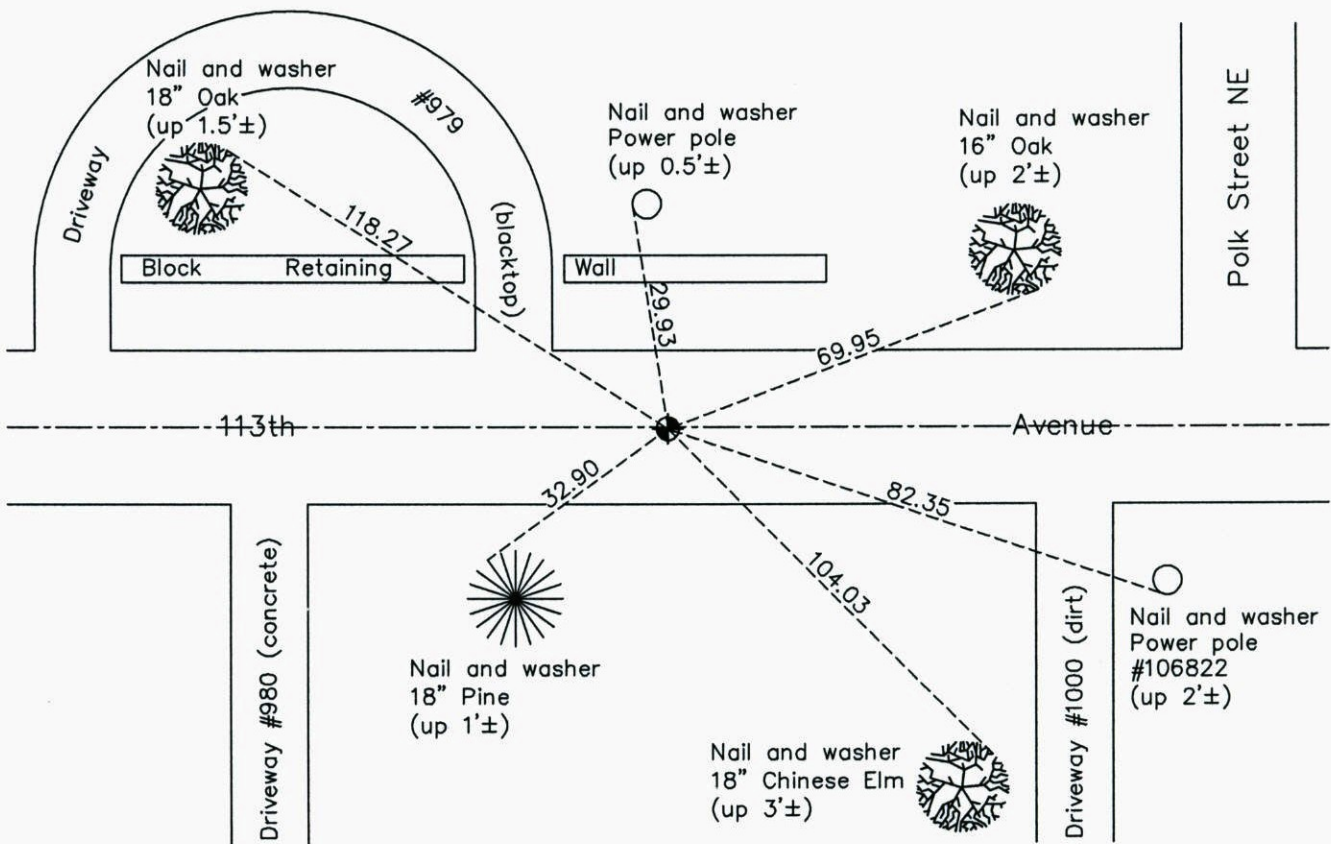
East 1/4 Corner of Sec. 18 Township 31 Range 23

On the 9th day of June, 1965, the described corner was evidenced by a 1/2" iron pipe

and to perpetuate the location of said corner, at the exact location thereof, a permanent marker was placed consisting of a cast iron monument

AND on the 22nd day of April, 2014, said permanent marker was found and the ties were updated

Updated reference ties are as shown below.



Revision Date
1/16/15

N.A.D. 1983 Coordinates
(1996 Adjustment)

County Project Coordinates	
Northing	<u>151112.4887</u>
Easting	<u>505501.8947</u>
Date	<u>9/03/98</u>

I hereby certify that this United States public land survey monument record is correct and complete to the best of my knowledge and belief.

Larry D. Hoium Date 1/16/15

Larry D. Hoium, Anoka County Surveyor
Minnesota License Number 18165