

# CERTIFICATE OF LOCATION OF GOVERNMENT CORNER

County of Anoka

State of Minnesota

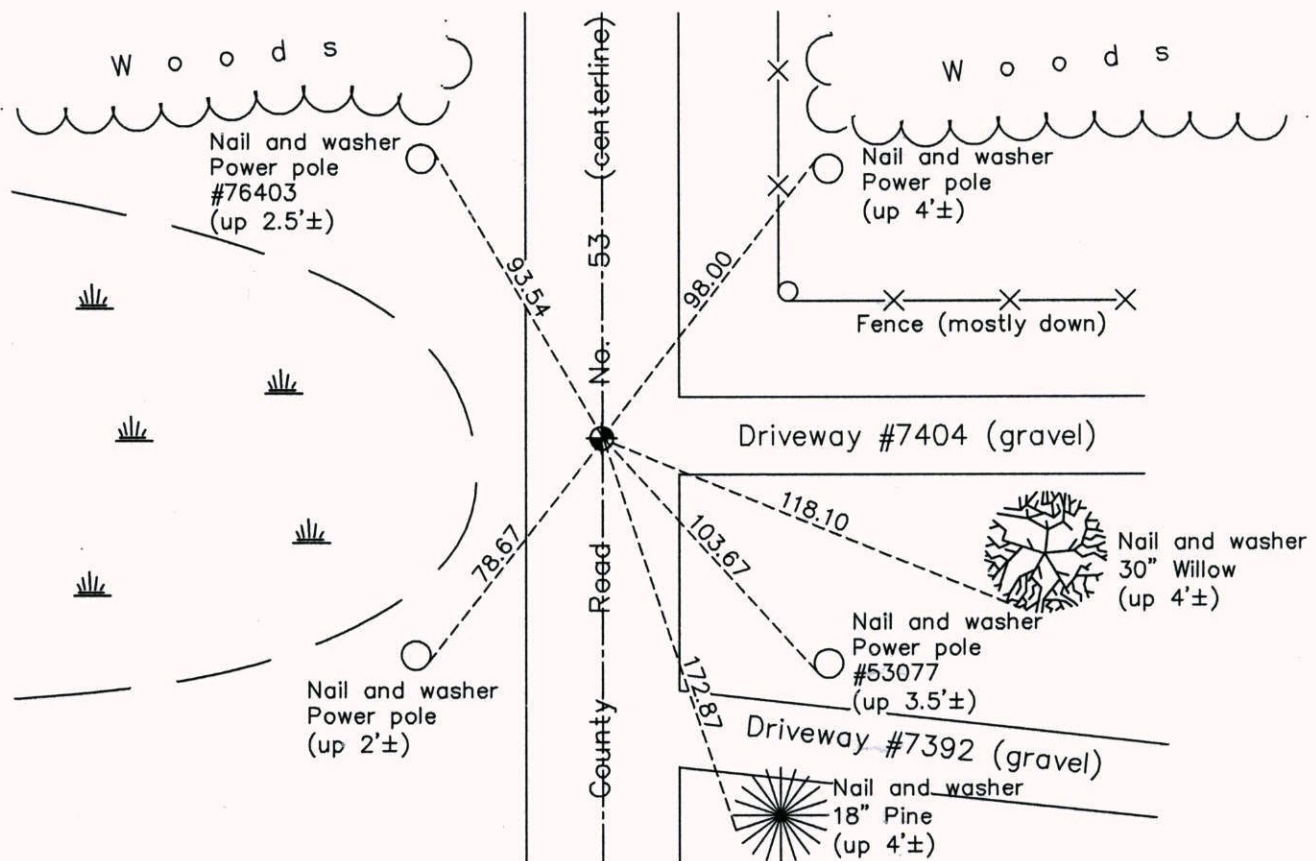
## East 1/4 Corner of Sec. 13 Township 31 Range 23

On the 12th day of April, 1962, the described corner was evidenced by a 3/4" iron pipe

and to perpetuate the location of said corner, at the exact location thereof, a permanent marker was placed consisting of a cast iron monument

AND on the 16th day of May, 2014, said permanent marker was found and the ties were updated

Updated reference ties are as shown below.



Revision Date

2/04/15

N.A.D. 1983 Coordinates  
(1996 Adjustment)

County Project Coordinates	
Northing	<u>150818.4233</u>
Easting	<u>531973.8444</u>
Date	<u>6/11/98</u>

I hereby certify that this United States public land survey monument record is correct and complete to the best of my knowledge and belief.

Date 2/04/15  
 Larry D. Hoium, Anoka County Surveyor  
 Minnesota License Number 18165