

CERTIFICATE OF LOCATION OF GOVERNMENT CORNER

County of Anoka

State of Minnesota

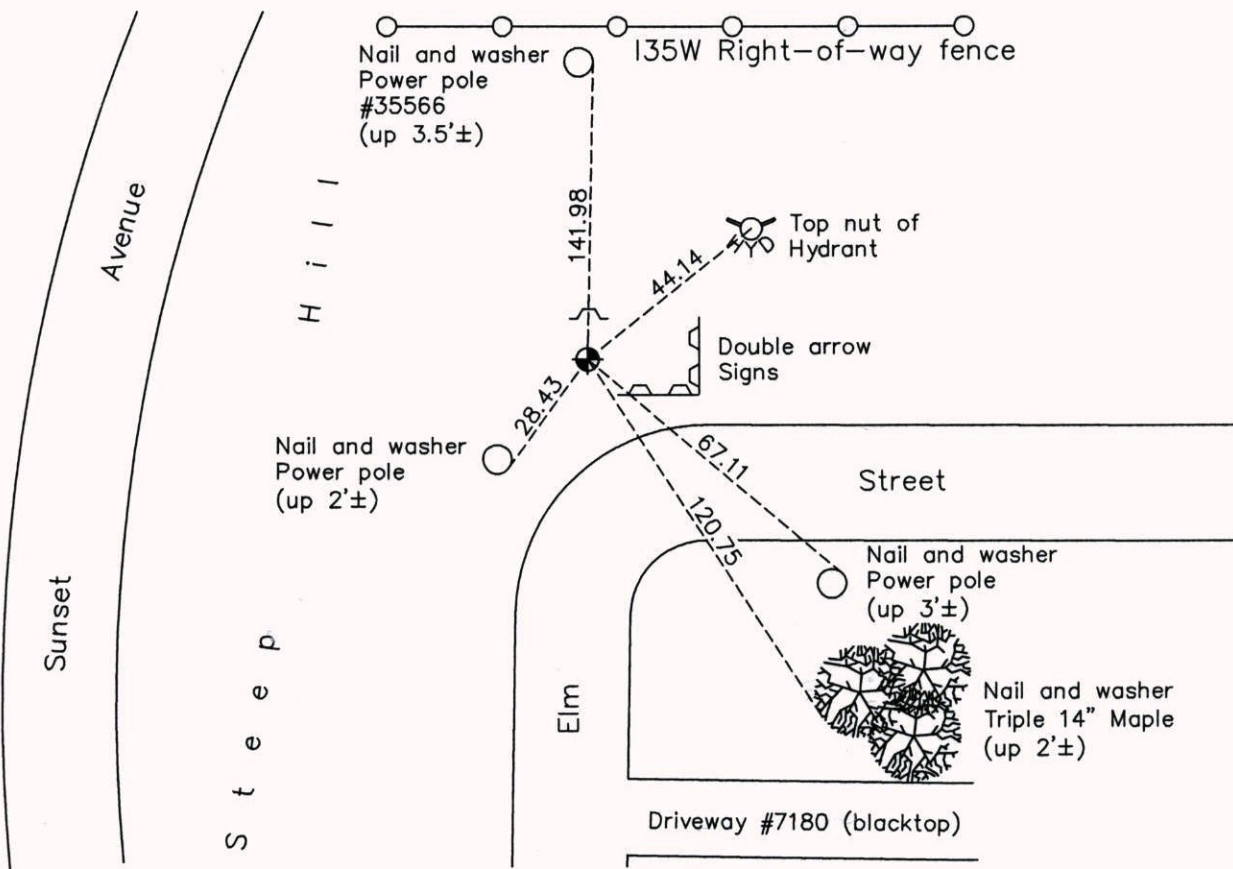
Southeast Corner of Sec. 13 Township 31 Range 23

On the 14th day of August, 1968, the described corner was evidenced by a granite monument

and to perpetuate the location of said corner, at the exact location thereof, a permanent marker was placed consisting of a cast iron monument with a sign and post on the north side

AND on the 28th day of May, 2014, said permanent marker was found down 0.3'± and the ties were updated

Updated reference ties are as shown below.



N
W ANOKA COUNTY SURVEYOR E
S

Revision Date
2/04/15

N.A.D. 1983 Coordinates
(1996 Adjustment)

County Project Coordinates	
Northing	148196.1790
Easting	531955.7889
Date	6/11/98

I hereby certify that this United States public land survey monument record is correct and complete to the best of my knowledge and belief.

Larry D. Hoium Date 2/04/15

Larry D. Hoium, Anoka County Surveyor
Minnesota License Number 18165