

# CERTIFICATE OF LOCATION OF GOVERNMENT CORNER

County of Anoka

State of Minnesota

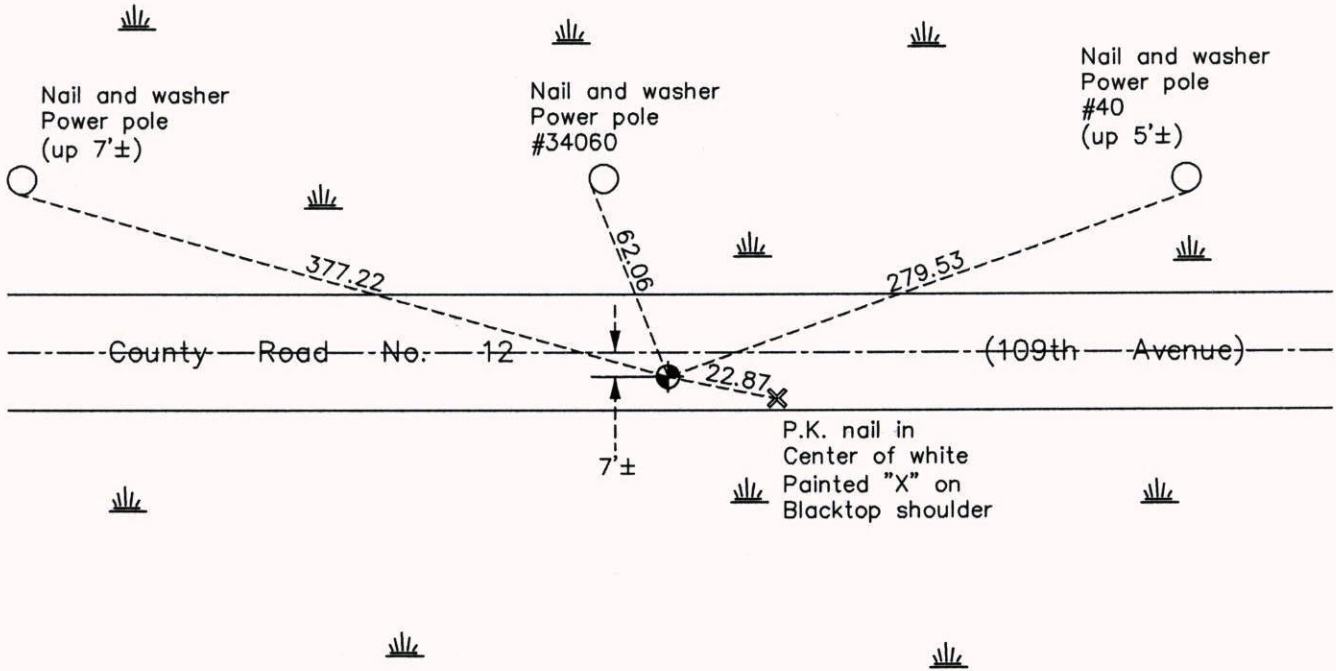
## North 1/4 Corner of Sec. 24 Township 31 Range 23

On the 19th day of July, 1962, the described corner was evidenced by a 3/4" iron pipe

and to perpetuate the location of said corner, at the exact location thereof, a permanent marker was placed consisting of a cast iron monument

AND on the 21st day of May, 2014, said permanent marker was found and the ties were updated

Updated reference ties are as shown below.



N

S

Revision Date

2/05/15

N.A.D. 1983 Coordinates  
(1996 Adjustment)

County Project Coordinates	
Northing	148234.9549
Easting	529325.1578
Date	10/20/98

I hereby certify that this United States public land survey monument record is correct and complete to the best of my knowledge and belief.

*Larry D. Hoium* Date 2/05/15

Larry D. Hoium, Anoka County Surveyor

Minnesota License Number 18165