

# CERTIFICATE OF LOCATION OF GOVERNMENT CORNER

County of Anoka

State of Minnesota

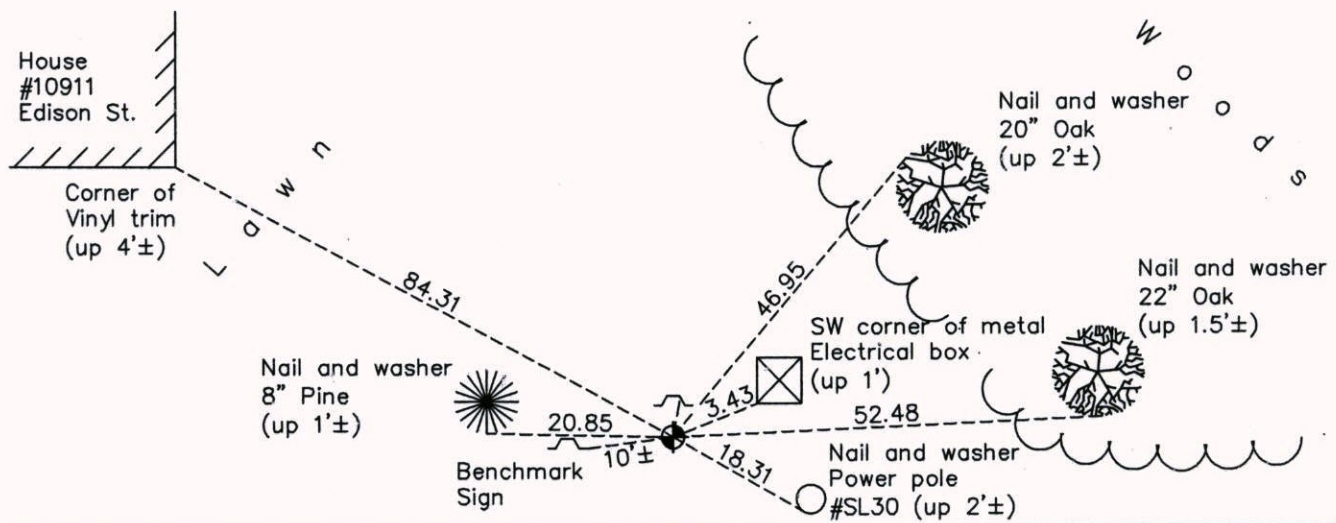
## South 1/4 Corner of Sec. 15 Township 31 Range 23

On the 17th day of November, 1964, the described corner was evidenced by area resurvey

and to perpetuate the location of said corner, at the exact location thereof, a permanent marker was placed consisting of a cast iron monument with a sign and post on the north side

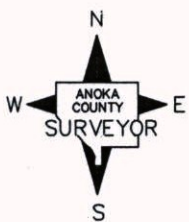
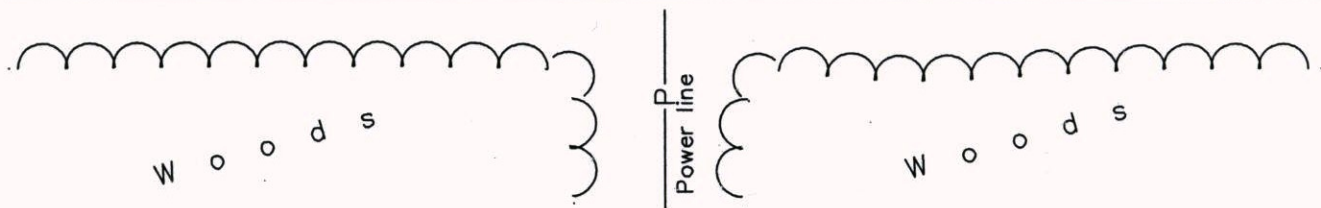
AND on the 10th day of June, 2014, said permanent marker was found and the ties were updated

Updated reference ties are as shown below.



109th

Avenue



Revision Date  
2/11/15

N.A.D. 1983 Coordinates  
(1996 Adjustment)

County Project Coordinates	
Northing	148371.1744
Easting	518723.2152
Date	10/20/98

I hereby certify that this United States public land survey monument record is correct and complete to the best of my knowledge and belief.

*Larry D. Hoium* Date 2/11/15

Larry D. Hoium, Anoka County Surveyor  
Minnesota License Number 18165