

CERTIFICATE OF LOCATION OF GOVERNMENT CORNER

County of Anoka

State of Minnesota

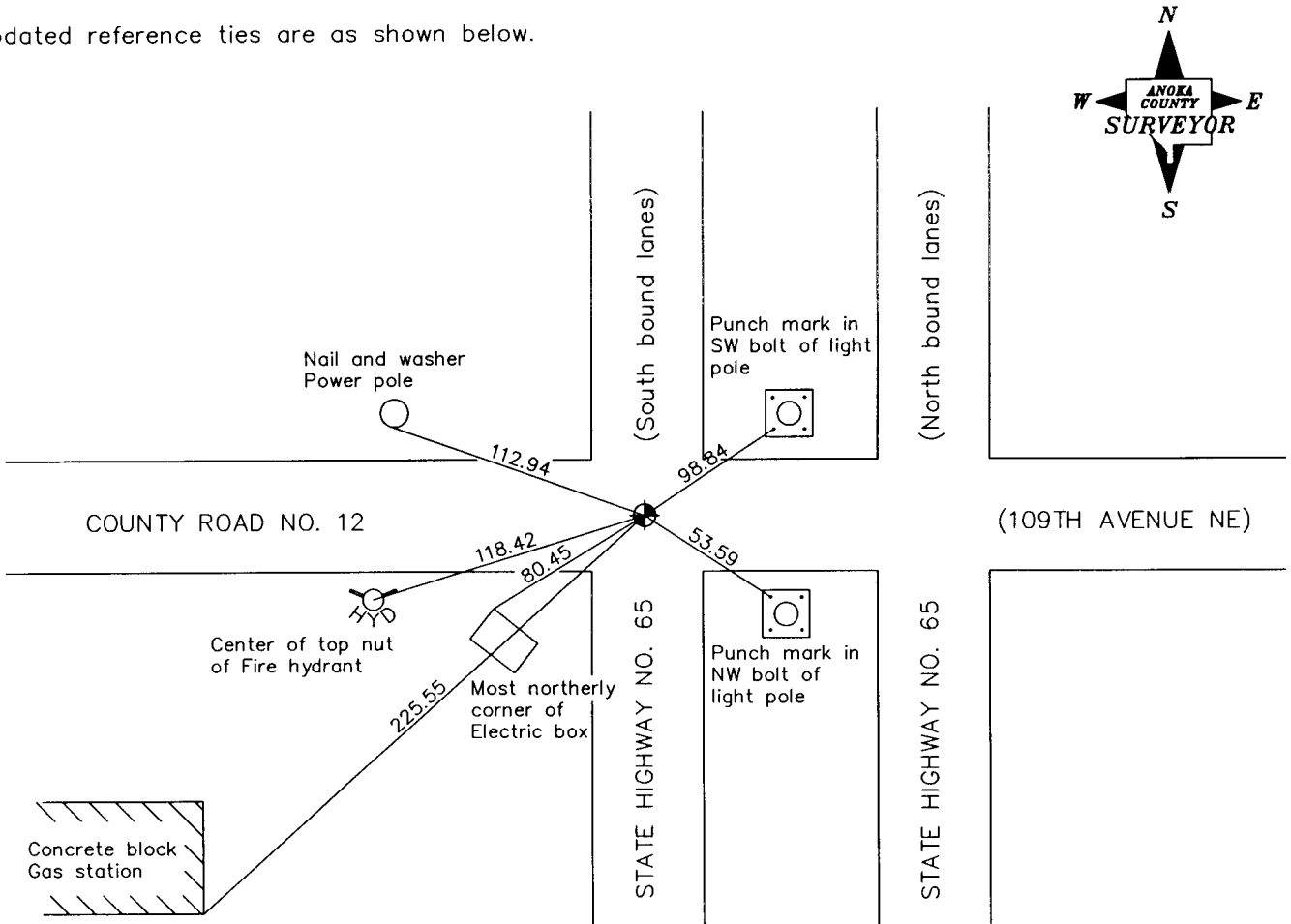
North 1/4 Corner of Sec. 20 Township 31 Range 23

On the 8th day of March, 1962, the described corner was evidenced by a disk

and to perpetuate the location of said corner, at the exact location thereof, a permanent marker was placed consisting of a cast iron monument

AND on the 5th day of September, 2006, said permanent marker was found under the blacktop and was raised to the surface

Updated reference ties are as shown below.



Revised date

6/4/86
10/24/90
7/18/95
Raised 9/5/06

N.A.D. 1983 Coordinates
(1996 Adjustment)

County Project Coordinates	
Northing	148456.8190
Easting	508106.7995
Date	9/5/06

I hereby certify that this United States public land survey monument record is correct and complete to the best of my knowledge and belief.

Larry D. Hoium Date 6/28/07
Larry D. Hoium, Anoka County Surveyor
 Minnesota License Number 18165