

CERTIFICATE OF LOCATION OF GOVERNMENT CORNER

County of Anoka

State of Minnesota

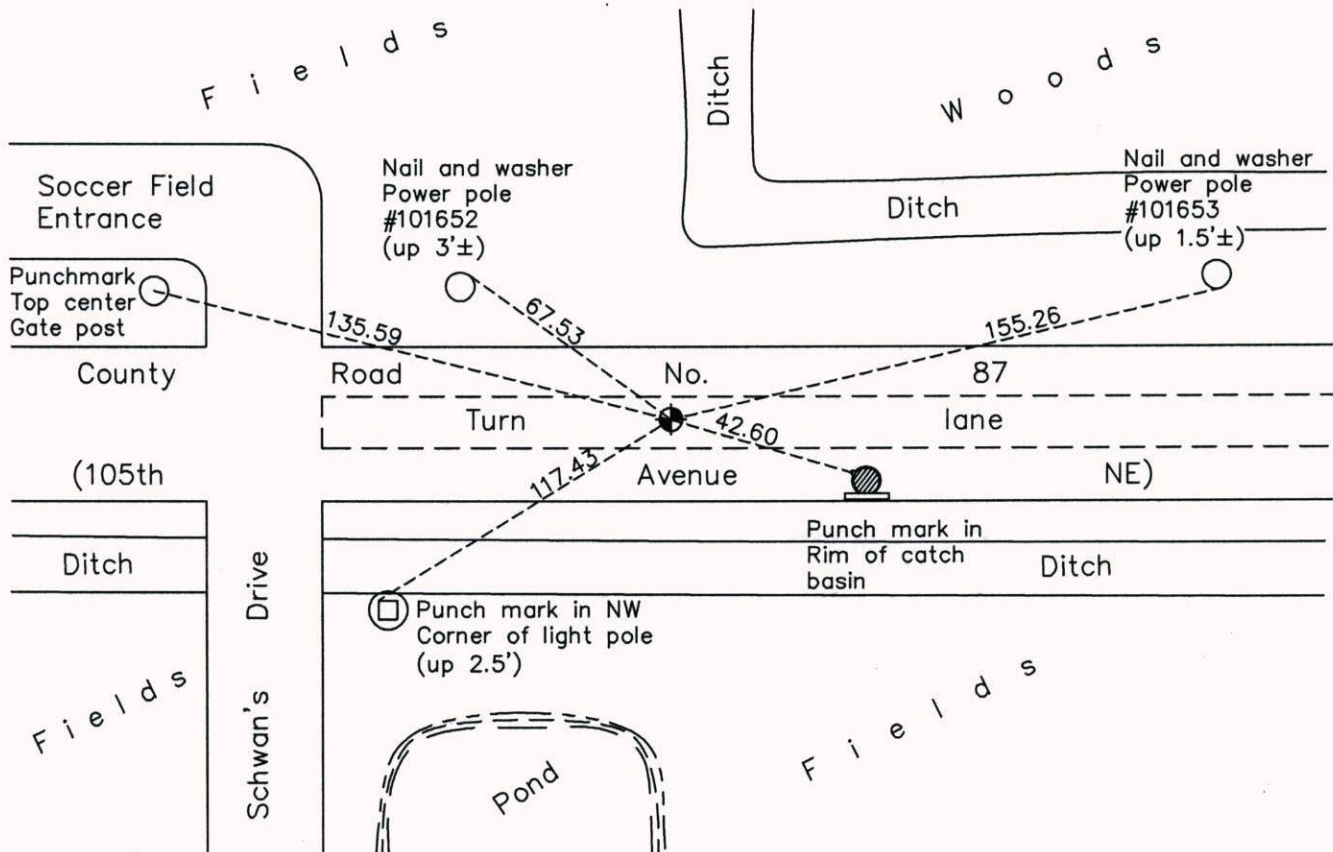
West 1/4 Corner of Sec. 21 Township 31 Range 23

On the 6th day of September, 1968, the described corner was evidenced by a 2" iron pipe

and to perpetuate the location of said corner, at the exact location thereof, a permanent marker was placed consisting of a cast iron monument

AND on the 25th day of June, 2014, said permanent marker was found and the ties were updated

Updated reference ties are as shown below.



N
W ANOKA COUNTY SURVEYOR E
S

Revision Date
2/18/15

N.A.D. 1983 Coordinates
(1996 Adjustment)

County Project Coordinates	
Northing	145756.9751
Easting	510762.3057
Date	11/09/98

I hereby certify that this United States public land survey monument record is correct and complete to the best of my knowledge and belief.

Larry D. Hoium Date 2/18/15

Larry D. Hoium, Anoka County Surveyor
Minnesota License Number 18165